

Anti-DES antibody (197-247) (STJA0006724)

STJA0006724

GENERAL INFORMATION

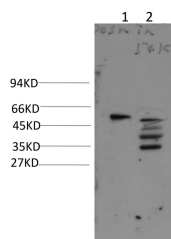
Product Type	Primary antibodies
Short Description	Rabbit polyclonal antibody anti-Desmin (197-247) is suitable for use in Immunohistochemistry and Western Blot research applications.
Applications	IHC/WB
Host/Source	Rabbit
Reactivity	Human/Mouse/Rat

PRODUCT PROPERTIES

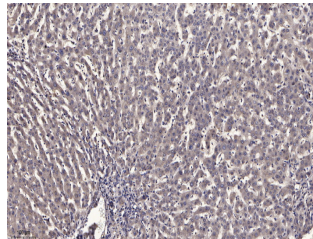
Clonality	Polyclonal
Clone ID	
Concentration	1 mg/mL
Conjugation	Unconjugated
Purification	The antibody was affinity-purified from rabbit antiserum by affinity-chromatography using epitope-specific immunogen.
Dilution Range	IHC-p1:50-200 WB 1:1000-2000
Formulation	Liquid in PBS containing 50% Glycerol, 0.5% BSA and 0.02% Sodium Azide.
Isotype	IgG
Storage Instruction	Store at -20°C for up to 1 year from the date of receipt, and avoid repeat freeze-thaw cycles.

TARGET INFORMATION

Gene ID	1674
Gene Symbol	DES
Uniprot ID	DESM_HUMAN
Immunogen	Synthesized peptide derived from human Desmin AA range: 197-247
Immunogen Region	197-247
Specificity	This antibody detects endogenous levels of Desmin at Human, Mouse, Rat
Immunogen Sequence	



Western blot analysis of 1) Mouse Heart Tissue, 2) Rat Heart Tissue lysate using DesminRabbit Polyclonal Antibody diluted at 1:2,000.



Immunohistochemical analysis of paraffin-embedded human liver cancer. 1, Antibody was diluted at 1:200 (44°C overnight). 2, Tris-EDTA, pH9.0 was used for antigen retrieval. 3, Secondary antibody was diluted at 1:200 (room temperature, 45min).

This product is suitable for in-vitro studies under the RESEARCH USE ONLY [RUO] licence. This product must not be used as for diagnostic or other medical purposes.
St John's Laboratory Ltd, Knowledge Dock Business Centre, University Way, London, E16 2RD | Tel: 0208 223 3081