

## Anti-TF antibody (230-310) (STJA0006698)

STJA0006698

### GENERAL INFORMATION

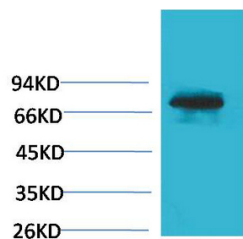
<b>Product Type</b>	Primary antibodies
<b>Short Description</b>	Rabbit polyclonal antibody anti-Serotransferrin (230-310) is suitable for use in Western Blot, Immunohistochemistry and Immunofluorescence research applications.
<b>Applications</b>	WB/IHC/IF
<b>Host/Source</b>	Rabbit
<b>Reactivity</b>	Human/Mouse/Rat

### PRODUCT PROPERTIES

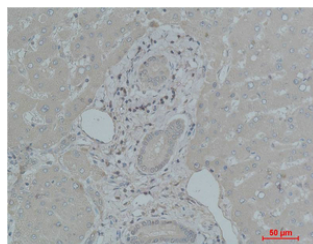
<b>Clonality</b>	Polyclonal
<b>Clone ID</b>	
<b>Concentration</b>	
<b>Conjugation</b>	Unconjugated
<b>Purification</b>	The antibody was affinity-purified from rabbit antiserum by affinity-chromatography using epitope-specific immunogen.
<b>Dilution Range</b>	WB 1:500-10000 IHC 1:200-500 IF 1:50-200
<b>Formulation</b>	Liquid in PBS pH7.4, containing 0.5% BSA, 0.02% Sodium Azide and 50% Glycerol.
<b>Isotype</b>	IgG
<b>Storage</b>	Store at -20°C for up to 1 year from the date of receipt, and avoid repeat freeze-thaw cycles.
<b>Instruction</b>	

### TARGET INFORMATION

<b>Gene ID</b>	7018
<b>Gene Symbol</b>	TF
<b>Uniprot ID</b>	TRFE_HUMAN
<b>Immunogen</b>	Synthesized peptide derived from part region of human protein AA range: 230-310
<b>Immunogen Region</b>	230-310
<b>Specificity</b>	The antibody detects endogenous TF protein.
<b>Immunogen Sequence</b>	



Western blot analysis of Human Blood sample using TF Polyclonal Antibody. Secondary antibody (STJ99666) was diluted at 1:20000



Immunohistochemical analysis of paraffin-embedded Human Liver Tissue using TF Polyclonal Antibody.

This product is suitable for in-vitro studies under the RESEARCH USE ONLY [RUO] licence. This product must not be used as for diagnostic or other medical purposes.  
St John's Laboratory Ltd, Knowledge Dock Business Centre, University Way, London, E16 2RD | Tel: 0208 223 3081