

Anti-LYN antibody (450-512) [PTR1320] (STJA0006278)

STJA0006278

GENERAL INFORMATION

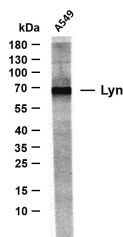
Product Type	Primary antibodies
Short Description	Mouse monoclonal antibody anti-Tyrosine-protein kinase Lyn (450-512) is suitable for use in Western Blot and ELISA research applications.
Applications	WB/ELISA
Host/Source	Mouse
Reactivity	Human/Mouse/Rat

PRODUCT PROPERTIES

Clonality	Monoclonal
Clone ID	PTR1320
Concentration	1 mg/mL
Conjugation	Unconjugated
Purification	The antibody was purified using affinity-chromatography using specific immunogen.
Dilution Range	WB 1:500-2000
Formulation	Liquid in PBS containing 50% Glycerol and 0.02% Sodium Azide.
Isotype	IgG1k
Storage Instruction	Store at -20°C for up to 1 year from the date of receipt, and avoid repeat freeze-thaw cycles.

TARGET INFORMATION

Gene ID	4067
Gene Symbol	LYN
Uniprot ID	LYN_HUMAN
Immunogen	Synthesized peptide derived from human Lyn. AA range: 450-512
Immunogen Region	450-512
Specificity	This antibody detects endogenous levels of Lyn at Human, mouse, rat
Immunogen Sequence	



Whole cell lysates were separated by 10% SDS-PAGE, and the membrane was blotted with anti-Lyn (PTR1320) antibody. The HRP-conjugated Goat anti-mouse IgG (H + L) antibody was used to detect the antibody. Lane 1: A549
 Predicted band size: 61kDa
 Observed band size: 61kDa

This product is suitable for in-vitro studies under the RESEARCH USE ONLY [RUO] licence. This product must not be used as for diagnostic or other medical purposes.
 St John's Laboratory Ltd, Knowledge Dock Business Centre, University Way, London, E16 2RD | Tel: 0208 223 3081