

## Anti-Phospho-eIF2S1-Ser51 antibody (1-100) [PTR1316] (STJA0006271)

STJA0006271

### GENERAL INFORMATION

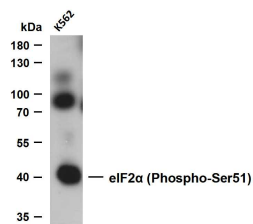
|                          |  |
|--------------------------|--|
| <b>Product Type</b>      | Primary antibodies   |
| <b>Short Description</b> | Mouse monoclonal antibody anti-Phospho-Eukaryotic translation initiation factor 2 subunit 1-Ser51 (1-100) is suitable for use in Western Blot and ELISA research applications. |
| <b>Applications</b>      | WB/ELISA   |
| <b>Host/Source</b>       | Mouse  |
| <b>Reactivity</b>        | Human/Mouse/Rat  |

### PRODUCT PROPERTIES

|                       |   |
|-----------------------|---|
| <b>Clonality</b>      | Monoclonal  |
| <b>Clone ID</b>       | PTR1316   |
| <b>Concentration</b>  | 1 mg/mL   |
| <b>Conjugation</b>    | Unconjugated  |
| <b>Purification</b>   | The antibody was affinity-purified from rabbit serum by affinity-chromatography using specific immunogen. |
| <b>Dilution Range</b> | WB 1:500-2000   |
| <b>Formulation</b>    | Liquid in PBS containing 50% Glycerol, 0.5% BSA and 0.02% Sodium Azide.                                   |
| <b>Isotype</b>        | IgG2bk  |
| <b>Storage</b>        | Store at -20°C for up to 1 year from the date of receipt, and avoid repeat freeze-thaw cycles.            |
| <b>Instruction</b>    |   |

### TARGET INFORMATION

|                           |   |
|---------------------------|---|
| <b>Gene ID</b>            | 1965  |
| <b>Gene Symbol</b>        | EIF2S1  |
| <b>Uniprot ID</b>         | IF2A_HUMAN  |
| <b>Immunogen</b>          | Synthesized peptide derived from human eIF2 Alpha AA range: 1-100                             |
| <b>Immunogen Region</b>   | 1-100   |
| <b>Specificity</b>        | This antibody detects endogenous levels of eIF2 Alpha at Human, Predict react with Mouse, Rat |
| <b>Immunogen Sequence</b> |   |



Whole cell lysates were separated by 10% SDS-PAGE, and the membrane was blotted with anti-eIF2 $\alpha$ - (Phospho-Ser51) (PTR1316) antibody. The HRP-conjugated Goat anti-mouse IgG (H + L) antibody was used to detect the antibody. Lane 1: K562 Predicted band size: 40kDa Observed band size: 40, 90kDa

This product is suitable for in-vitro studies under the RESEARCH USE ONLY [RUO] licence. This product must not be used as for diagnostic or other medical purposes.  
St John's Laboratory Ltd, Knowledge Dock Business Centre, University Way, London, E16 2RD | Tel: 0208 223 3081