

## Anti-PAX2 antibody (150-250) [PTR1301] (STJA0006267)

STJA0006267

### GENERAL INFORMATION

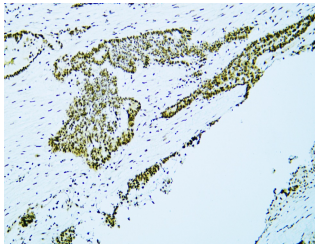
<b>Product Type</b>	Primary antibodies
<b>Short Description</b>	Mouse monoclonal antibody anti-Paired box protein Pax-2 (150-250) is suitable for use in Western Blot, Immunohistochemistry and ELISA research applications.
<b>Applications</b>	WB/IHC/ELISA
<b>Host/Source</b>	Mouse
<b>Reactivity</b>	Human

### PRODUCT PROPERTIES

<b>Clonality</b>	Monoclonal
<b>Clone ID</b>	PTR1301
<b>Concentration</b>	1 mg/mL
<b>Conjugation</b>	Unconjugated
<b>Purification</b>	The antibody was purified using affinity-chromatography using specific immunogen.
<b>Dilution Range</b>	WB 1:500-2000 IHC 1:50-200
<b>Formulation</b>	Liquid in PBS containing 50% Glycerol and 0.02% Sodium Azide.
<b>Isotype</b>	IgG1k
<b>Storage</b>	Store at -20°C for up to 1 year from the date of receipt, and avoid repeat freeze-thaw cycles.
<b>Instruction</b>	

### TARGET INFORMATION

<b>Gene ID</b>	5076
<b>Gene Symbol</b>	PAX2
<b>Uniprot ID</b>	PAX2_HUMAN
<b>Immunogen</b>	Synthesized peptide derived from human PAX2. AA range: 150-250
<b>Immunogen Region</b>	150-250
<b>Specificity</b>	This antibody detects endogenous levels of PAX2 at Human, mouse, rat
<b>Immunogen Sequence</b>	



Human ovarian serous carcinoma tissue was stained with Anti-PAX2 (PTR1301) Antibody

This product is suitable for in-vitro studies under the RESEARCH USE ONLY [RUO] licence. This product must not be used as for diagnostic or other medical purposes.  
St John's Laboratory Ltd, Knowledge Dock Business Centre, University Way, London, E16 2RD | Tel: 0208 223 3081