

## Anti-KEAP1 antibody (400-500) [PTR2556] (STJA0006263)

STJA0006263

### GENERAL INFORMATION

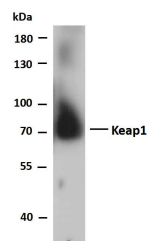
|                          |   |
|--------------------------|---|
| <b>Product Type</b>      | Primary antibodies  |
| <b>Short Description</b> | Mouse monoclonal antibody anti-Kelch-like ECH-associated protein 1 (400-500) is suitable for use in Western Blot and ELISA research applications. |
| <b>Applications</b>      | WB/ELISA  |
| <b>Host/Source</b>       | Mouse   |
| <b>Reactivity</b>        | Human/Mouse/Dog/Rat   |

### PRODUCT PROPERTIES

|                       |  |
|-----------------------|--|
| <b>Clonality</b>      | Monoclonal   |
| <b>Clone ID</b>       | PTR2556  |
| <b>Concentration</b>  |  |
| <b>Conjugation</b>    | Unconjugated   |
| <b>Purification</b>   | Purified using Protein G purification.   |
| <b>Dilution Range</b> | WB 1:500-2000<br>ELISA 1:5000-20000  |
| <b>Formulation</b>    | Liquid in PBS pH7.4 containing 50% Glycerol and 0.03% Proclin 300.                             |
| <b>Isotype</b>        | IgG1k  |
| <b>Storage</b>        | Store at -20°C for up to 1 year from the date of receipt, and avoid repeat freeze-thaw cycles. |
| <b>Instruction</b>    |  |

### TARGET INFORMATION

|                           |   |
|---------------------------|---|
| <b>Gene ID</b>            | 9817  |
| <b>Gene Symbol</b>        | KEAP1   |
| <b>Uniprot ID</b>         | KEAP1_HUMAN   |
| <b>Immunogen</b>          | Synthesized peptide derived from human Keap1 AA range: 400-500        |
| <b>Immunogen Region</b>   | 400-500   |
| <b>Specificity</b>        | This antibody detects endogenous levels of Keap1 at Human, Mouse, Rat |
| <b>Immunogen Sequence</b> |   |



Whole cell lysates of A431 were separated by 10% SDS-PAGE, and the membrane was blotted with anti-Keap1 (PTR2556) antibody. The HRP-conjugated Goat anti-mouse IgG (H+L) antibody was used to detect the antibody. Lane 1: A431 Predicted band size: 69kDa Observed band size: 69kDa

This product is suitable for in-vitro studies under the RESEARCH USE ONLY [RUO] licence. This product must not be used as for diagnostic or other medical purposes.  
St John's Laboratory Ltd, Knowledge Dock Business Centre, University Way, London, E16 2RD | Tel: 0208 223 3081