

Anti-LIMK1 antibody (500-600) [PTR2545] (STJA0006260)
STJA0006260

GENERAL INFORMATION

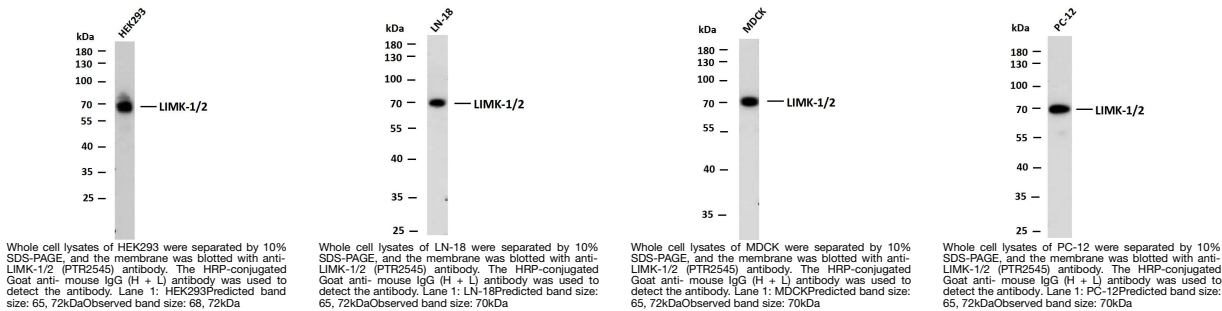
Product Type	Primary antibodies
Short Description	Mouse monoclonal antibody anti-LIM domain kinase 1 (500-600) is suitable for use in Western Blot and ELISA research applications.
Applications	WB/ELISA
Host/Source	Mouse
Reactivity	Human/Mouse/Rat

PRODUCT PROPERTIES

Clonality	Monoclonal
Clone ID	PTR2545
Concentration	
Conjugation	Unconjugated
Purification	Purified using Protein G purification.
Dilution Range	WB 1:500-2000 ELISA 1:5000-20000
Formulation	Liquid in PBS pH7.4 containing 50% Glycerol and 0.03% Proclin 300.
Isotype	IgG1 Lambda
Storage Instruction	Store at -20°C for up to 1 year from the date of receipt, and avoid repeat freeze-thaw cycles.

TARGET INFORMATION

Gene ID	3985 3984
Gene Symbol	LIMK2 LIMK1
Uniprot ID	LIMK2_HUMAN LIMK1_HUMAN
Immunogen	Synthesized peptide derived from human LIMK-1/2 AA range: 500-600
Immunogen Region	500-600
Specificity	This antibody detects endogenous levels of LIMK-1/2 at Human, Mouse, Rat
Immunogen Sequence	



This product is suitable for in-vitro studies under the RESEARCH USE ONLY [RUO] licence. This product must not be used as for diagnostic or other medical purposes.
St John's Laboratory Ltd, Knowledge Dock Business Centre, University Way, London, E16 2RD | Tel: 0208 223 3081