

Anti-EGFR antibody (300-400) [PTR2121] (STJA0006243)

STJA0006243

GENERAL INFORMATION

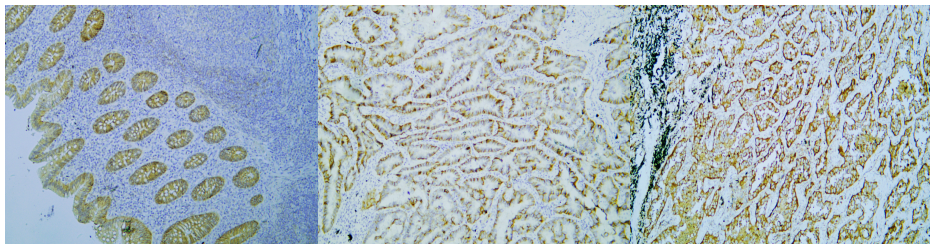
Product Type	Primary antibodies
Short Description	Mouse monoclonal antibody anti-Epidermal growth factor receptor (300-400) is suitable for use in Western Blot and ELISA research applications.
Applications	WB/ELISA
Host/Source	Mouse
Reactivity	Human

PRODUCT PROPERTIES

Clonality	Monoclonal
Clone ID	PTR2121
Concentration	
Conjugation	Unconjugated
Purification	The antibody was purified using affinity-chromatography using specific immunogen.
Dilution Range	WB 1:1000
Formulation	Liquid in PBS pH7.4, containing 0.5% BSA, 0.02% Sodium Azide and 50% Glycerol.
Isotype	IgG2ak
Storage Instruction	Store at -20°C for up to 1 year from the date of receipt, and avoid repeat freeze-thaw cycles.

TARGET INFORMATION

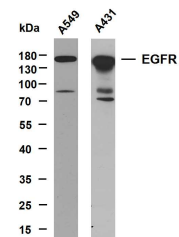
Gene ID	1956
Gene Symbol	EGFR
Uniprot ID	EGFR_HUMAN
Immunogen	Synthetic Peptide of EGFR AA range: 300-400
Immunogen Region	300-400
Specificity	The antibody detects endogenous EGFR proteins.
Immunogen Sequence	



Human appendix tissue was stained with Anti-EGFR (PTR2121) Antibody

Human lung adenocarcinoma tissue was stained with Anti-EGFR (PTR2121) Antibody

Human lung adenocarcinoma tissue was stained with Anti-EGFR (PTR2121) Antibody



Various whole cell lysates were separated by 8% SDS-PAGE, and the membrane was blotted with anti-EGFR (PTR2121) antibody. The HRP-conjugated Goat anti-mouse IgG (H + L) antibody was used to detect the antibody. Lane 1: A549 Lane 2: A431 Predicted band size: 170kDa Observed band size: 170kDa

This product is suitable for in-vitro studies under the RESEARCH USE ONLY [RUO] licence. This product must not be used as for diagnostic or other medical purposes.
St John's Laboratory Ltd, Knowledge Dock Business Centre, University Way, London, E16 2RD | Tel: 0208 223 3081