

## Anti-TUBG1 antibody (350-451) [PT2188] (STJA0006240)

STJA0006240

### GENERAL INFORMATION

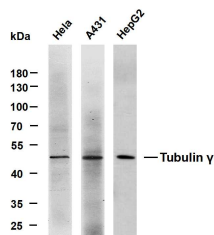
<b>Product Type</b>	Primary antibodies
<b>Short Description</b>	Mouse monoclonal antibody anti-Tubulin gamma-1 chain (350-451) is suitable for use in Western Blot and ELISA research applications.
<b>Applications</b>	WB/ELISA
<b>Host/Source</b>	Mouse
<b>Reactivity</b>	Human

### PRODUCT PROPERTIES

<b>Clonality</b>	Monoclonal
<b>Clone ID</b>	PT2188
<b>Concentration</b>	1 mg/mL
<b>Conjugation</b>	Unconjugated
<b>Purification</b>	The antibody was purified using affinity-chromatography using specific immunogen.
<b>Dilution Range</b>	WB 1:500-2000
<b>Formulation</b>	Liquid in PBS containing 50% Glycerol and 0.02% Sodium Azide.
<b>Isotype</b>	IgG2bk
<b>Storage Instruction</b>	Store at -20°C for up to 1 year from the date of receipt, and avoid repeat freeze-thaw cycles.

### TARGET INFORMATION

<b>Gene ID</b>	7283
<b>Gene Symbol</b>	TUBG1
<b>Uniprot ID</b>	TBG1_HUMAN
<b>Immunogen</b>	Synthesized peptide derived from human Tubulin Gamma. AA range: 350-451
<b>Immunogen Region</b>	350-451
<b>Specificity</b>	This antibody detects endogenous levels of Tubulin Gamma at Human; Maybe react with mouse, rat
<b>Immunogen Sequence</b>	



Various whole cell lysates were separated by 10% SDS-PAGE, and the membrane was blotted with anti-Tubulin  $\beta$  (PT2188) antibody. The HRP-conjugated anti-mouse IgG antibody was used to detect the antibody. Lane 1: HeLa Lane 2: A431 Lane 3: HepG2 Predicted band size: 48kDa Observed band size: 48kDa

This product is suitable for in-vitro studies under the RESEARCH USE ONLY [RUO] licence. This product must not be used as for diagnostic or other medical purposes.  
St John's Laboratory Ltd, Knowledge Dock Business Centre, University Way, London, E16 2RD | Tel: 0208 223 3081