

Anti-TFE3 antibody (100-200) [PT2169] (STJA0006238)

STJA0006238

GENERAL INFORMATION

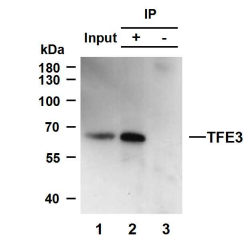
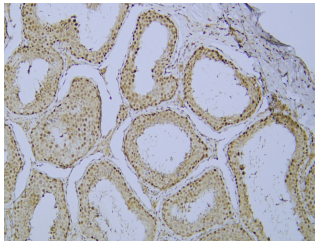
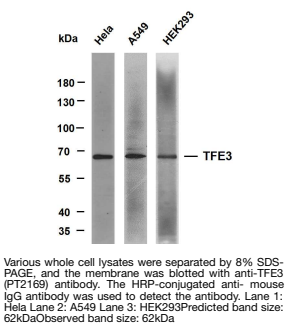
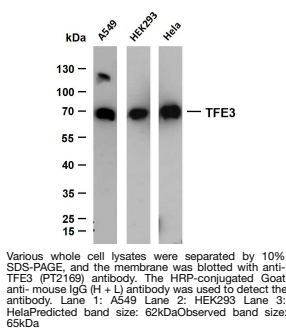
Product Type	Primary antibodies
Short Description	Mouse monoclonal antibody anti-Transcription factor E3 (100-200) is suitable for use in Western Blot, Immunoprecipitation, Immunohistochemistry and ELISA research applications.
Applications	WB/IP/IHC/ELISA
Host/Source	Mouse
Reactivity	Human/Mouse/Bovine

PRODUCT PROPERTIES

Clonality	Monoclonal
Clone ID	PT2169
Concentration	1 mg/mL
Conjugation	Unconjugated
Purification	The antibody was affinity-purified from rabbit serum by affinity-chromatography using specific immunogen.
Dilution Range	WB 1:500-2000 IP 1:50-100 IHC-p 1:200-400
Formulation	Liquid in PBS containing 50% Glycerol, 0.5% BSA and 0.02% Sodium Azide.
Isotype	IgG1k
Storage Instruction	Store at -20°C for up to 1 year from the date of receipt, and avoid repeat freeze-thaw cycles.

TARGET INFORMATION

Gene ID	7030
Gene Symbol	TFE3
Uniprot ID	TFE3_HUMAN
Immunogen	Synthesized peptide derived from human TFE3 AA range: 100-200
Immunogen Region	100-200
Specificity	This antibody detects endogenous levels of TFE3 at Human, Predict react with Mouse;Rat
Immunogen Sequence	



This product is suitable for in-vitro studies under the RESEARCH USE ONLY [RUO] licence. This product must not be used as for diagnostic or other medical purposes.
St John's Laboratory Ltd, Knowledge Dock Business Centre, University Way, London, E16 2RD | Tel: 0208 223 3081