

## Anti-PSCA antibody (1-100) [PT2119] (STJA0006235)

STJA0006235

### GENERAL INFORMATION

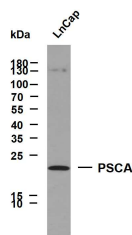
<b>Product Type</b>	Primary antibodies
<b>Short Description</b>	Mouse monoclonal antibody anti-Prostate stem cell antigen (1-100) is suitable for use in Western Blot and ELISA research applications.
<b>Applications</b>	WB/ELISA
<b>Host/Source</b>	Mouse
<b>Reactivity</b>	Human

### PRODUCT PROPERTIES

<b>Clonality</b>	Monoclonal
<b>Clone ID</b>	PT2119
<b>Concentration</b>	1 mg/mL
<b>Conjugation</b>	Unconjugated
<b>Purification</b>	The antibody was affinity-purified from rabbit serum by affinity-chromatography using specific immunogen.
<b>Dilution Range</b>	WB 1:500-2000
<b>Formulation</b>	Liquid in PBS containing 50% Glycerol, 0.5% BSA and 0.02% Sodium Azide.
<b>Isotype</b>	IgG2bk
<b>Storage Instruction</b>	Store at -20°C for up to 1 year from the date of receipt, and avoid repeat freeze-thaw cycles.

### TARGET INFORMATION

<b>Gene ID</b>	8000
<b>Gene Symbol</b>	PSCA
<b>Uniprot ID</b>	PSCA_HUMAN
<b>Immunogen</b>	Synthesized peptide derived from human PSCA AA range: 1-100
<b>Immunogen Region</b>	1-100
<b>Specificity</b>	This antibody detects endogenous levels of PSCA at Only Human
<b>Immunogen Sequence</b>	



Whole cell lysates were separated by 12% SDS-PAGE, and the membrane was blotted with anti-SMMHC (PT2119) antibody. The HRP-conjugated anti-mouse IgG antibody was used to detect the antibody. Lane 1: LysCap. Predicted band size: 13kDa. Observed band size: 18kDa.

This product is suitable for in-vitro studies under the RESEARCH USE ONLY [RUO] licence. This product must not be used as for diagnostic or other medical purposes.  
St John's Laboratory Ltd, Knowledge Dock Business Centre, University Way, London, E16 2RD | Tel: 0208 223 3081