

## Anti-PRKCA antibody (450-550) [PTR1190] (STJA0006229)

STJA0006229

### GENERAL INFORMATION

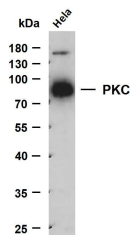
<b>Product Type</b>	Primary antibodies
<b>Short Description</b>	Mouse monoclonal antibody anti-Protein kinase C alpha type (450-550) is suitable for use in Western Blot and ELISA research applications.
<b>Applications</b>	WB/ELISA
<b>Host/Source</b>	Mouse
<b>Reactivity</b>	Human/Mouse/Rat/Rabbit/Bovine

### PRODUCT PROPERTIES

<b>Clonality</b>	Monoclonal
<b>Clone ID</b>	PTR1190
<b>Concentration</b>	1 mg/mL
<b>Conjugation</b>	Unconjugated
<b>Purification</b>	The antibody was affinity-purified from rabbit serum by affinity-chromatography using specific immunogen.
<b>Dilution Range</b>	WB 1:500-2000
<b>Formulation</b>	Liquid in PBS containing 50% Glycerol, 0.5% BSA and 0.02% Sodium Azide.
<b>Isotype</b>	
<b>Storage Instruction</b>	Store at -20°C for up to 1 year from the date of receipt, and avoid repeat freeze-thaw cycles.

### TARGET INFORMATION

<b>Gene ID</b>	5578
<b>Gene Symbol</b>	PRKCA
<b>Uniprot ID</b>	KPCA_HUMAN
<b>Immunogen</b>	Synthesized peptide derived from human PKC AA range: 450-550
<b>Immunogen Region</b>	450-550
<b>Specificity</b>	This antibody detects endogenous levels of PKC at Human, Predict react with Mouse, Rat
<b>Immunogen Sequence</b>	



Whole cell lysates were separated by 15% SDS-PAGE, and the membrane was blotted with anti-PKC (PTR1190) antibody. The HRP-conjugated Goat anti-mouse IgG (H + L) antibody was used to detect the antibody. Lane 1: HeLa Predicted band size: 70kDa Observed band size: 80kDa

This product is suitable for in-vitro studies under the RESEARCH USE ONLY [RUO] licence. This product must not be used as for diagnostic or other medical purposes.  
St John's Laboratory Ltd, Knowledge Dock Business Centre, University Way, London, E16 2RD | Tel: 0208 223 3081