

Anti-CREBBP antibody (900-1000) [PT0619] (STJA0006228)

STJA0006228

GENERAL INFORMATION

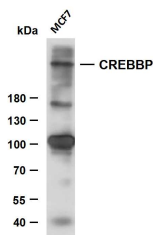
Product Type	Primary antibodies
Short Description	Mouse monoclonal antibody anti-CREB-binding protein (900-1000) is suitable for use in Western Blot and ELISA research applications.
Applications	WB/ELISA
Host/Source	Mouse
Reactivity	Human

PRODUCT PROPERTIES

Clonality	Monoclonal
Clone ID	PT0619
Concentration	1 mg/mL
Conjugation	Unconjugated
Purification	The antibody was affinity-purified from rabbit serum by affinity-chromatography using specific immunogen.
Dilution Range	WB 1:500-2000
Formulation	Liquid in PBS containing 50% Glycerol, 0.5% BSA and 0.02% Sodium Azide.
Isotype	IgG2bk
Storage Instruction	Store at -20°C for up to 1 year from the date of receipt, and avoid repeat freeze-thaw cycles.

TARGET INFORMATION

Gene ID	1387
Gene Symbol	CREBBP
Uniprot ID	CBP_HUMAN
Immunogen	Synthesized peptide derived from human CREBBP AA range: 900-1000
Immunogen Region	900-1000
Specificity	This antibody detects endogenous levels of CREBBP at Human, Predict react with Mouse, Rat
Immunogen Sequence	



Whole cell lysates were separated by 6% SDS-PAGE and the membrane was blotted with anti-CREBBP (PT0619) antibody. The HRP-conjugated Goat anti-mouse IgG (H + L) antibody was used to detect the antibody. Lane 1: MCF7 Predicted band size: 266kDa Observed band size: 266kDa

This product is suitable for in-vitro studies under the RESEARCH USE ONLY [RUO] licence. This product must not be used as for diagnostic or other medical purposes.
St John's Laboratory Ltd, Knowledge Dock Business Centre, University Way, London, E16 2RD | Tel: 0208 223 3081