

Anti-TUBB3 antibody [5G3] {AbFluor™ 680} (STJA0006211)

STJA0006211

GENERAL INFORMATION

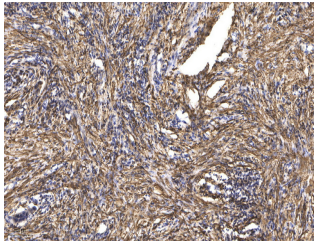
Product Type	Primary antibodies
Short Description	Mouse monoclonal antibody anti-Tubulin beta-3 chain is suitable for use in Western Blot, Immunofluorescence and Immunohistochemistry research applications.
Applications	WB/IF/IHC
Host/Source	Mouse
Reactivity	Human/Rat/Mouse/Monkey/Dog/Chicken/Hamster/Rabbit/Sheep/Insect/Yeast

PRODUCT PROPERTIES

Clonality	Monoclonal
Clone ID	5G3
Concentration	1 mg/mL
Conjugation	AbFluor™ 680
Purification	The antibody was purified using affinity-chromatography using specific immunogen.
Dilution	Optimal working dilutions should be determined experimentally by the investigator Suggested starting dilutions are as follows: IHC
Range	1:200 IF 1:200
Formulation	Liquid in PBS pH7.4, containing 0.02% Sodium Azide and 50% Glycerol.
Isotype	IgG1
Storage	Stable for one year at -15°C to -25°C from date of shipment. For maximum recovery of product, centrifuge the original vial after thawing
Instruction	and prior to removing the cap. Aliquot to avoid repeated freezing

TARGET INFORMATION

Gene ID	10381
Gene Symbol	TUBB3
Uniprot ID	TBB3_HUMAN
Immunogen	
Immunogen	
Region	
Specificity	Beta-Tubulin Monoclonal Antibody (5G3) AbFluor™ 680 Conjugated specially designed for your Immunofluorescence analysis.
Immunogen	
Sequence	



Immunohistochemical analysis of paraffin-embedded human Squamous cell carcinoma of lung. 1. Antibody was diluted at 1:200 (4°C overnight). 2. Tris-EDTA, pH9.0 was used for antigen retrieval. 3. Secondary antibody was diluted at 1:200 (room temperature, 45min).

This product is suitable for in-vitro studies under the RESEARCH USE ONLY [RUO] licence. This product must not be used as for diagnostic or other medical purposes.
St John's Laboratory Ltd, Knowledge Dock Business Centre, University Way, London, E16 2RD | Tel: 0208 223 3081