

Anti-TUBA1A antibody [8F11] {FITC} (STJA0006192)

STJA0006192

GENERAL INFORMATION

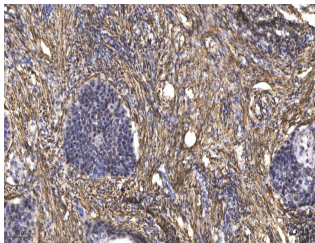
Product Type	Primary antibodies
Short Description	Mouse monoclonal antibody anti-Tubulin alpha-1A chain is suitable for use in Western Blot, Immunohistochemistry, Immunofluorescence and Immunoprecipitation research applications.
Applications	WB/IHC/IF/IP
Host/Source	Mouse
Reactivity	Human/Rat/Mouse

PRODUCT PROPERTIES

Clonality	Monoclonal
Clone ID	8F11
Concentration	1 mg/mL
Conjugation	FITC
Purification	The antibody was purified using affinity-chromatography using specific immunogen.
Dilution	Optimal working dilutions should be determined experimentally by the investigator Suggested starting dilutions are as follows: IHC
Range	1:50-300 IF 1:200
Formulation	Liquid in PBS pH7.4, containing 0.02% Sodium Azide and 50% Glycerol.
Isotype	IgG
Storage	Stable for one year at -15°C to -25°C from date of shipment. For maximum recovery of product, centrifuge the original vial after thawing
Instruction	and prior to removing the cap. Aliquot to avoid repeated freezi

TARGET INFORMATION

Gene ID	7846 10376
Gene Symbol	TUBA1A TUBA1B
Uniprot ID	TBA1A_HUMAN TBA1B_HUMAN
Immunogen	
Immunogen Region	
Specificity	Alpha-tubulin Monoclonal Antibody (8F11) FITC conjugated specially designed for your WB or IHC analysis.
Immunogen Sequence	



Immunohistochemical analysis of paraffin-embedded human Squamous cell carcinoma of lung. 1. Antibody was diluted at 1:200 (4°C overnight). 2. Tris-EDTA, pH9.0 was used for antigen retrieval. 3. Secondary antibody was diluted at 1:200 (room temperature, 45min).