

Anti-TUBA1A antibody [8F11] {AbFluor™ 680} (STJA0006188)

STJA0006188

GENERAL INFORMATION

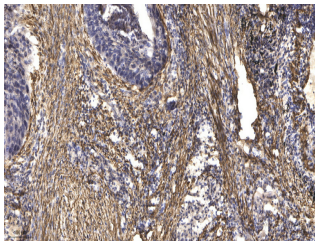
| | |
|--------------------------|--|
| Product Type | Primary antibodies |
| Short Description | Mouse monoclonal antibody anti-Tubulin alpha-1A chain is suitable for use in Western Blot, Immunohistochemistry, Immunofluorescence and Immunoprecipitation research applications. |
| Applications | WB/IHC/IF/IP |
| Host/Source | Mouse |
| Reactivity | Human/Rat/Mouse |

PRODUCT PROPERTIES

| | |
|----------------------|--|
| Clonality | Monoclonal |
| Clone ID | 8F11 |
| Concentration | 1 mg/mL |
| Conjugation | AbFluor™ 680 |
| Purification | The antibody was purified using affinity-chromatography using specific immunogen. |
| Dilution | Optimal working dilutions should be determined experimentally by the investigator Suggested starting dilutions are as follows: IHC |
| Range | 1:50-300 IF 1:200 |
| Formulation | Liquid in PBS pH7.4, containing 0.02% Sodium Azide and 50% Glycerol. |
| Isotype | IgG |
| Storage | Stable for one year at -15°C to -25°C from date of shipment. For maximum recovery of product, centrifuge the original vial after thawing |
| Instruction | and prior to removing the cap. Aliquot to avoid repeated freezi |

TARGET INFORMATION

| | |
|---------------------------|---|
| Gene ID | 7846 10376 |
| Gene Symbol | TUBA1A TUBA1B |
| Uniprot ID | TBA1A_HUMAN TBA1B_HUMAN |
| Immunogen | |
| Immunogen Region | |
| Specificity | Alpha-tubulin Monoclonal Antibody (8F11) AbFluor™ 680 Conjugated specially designed for your Immunofluorescence analysis. |
| Immunogen Sequence | |



Immunohistochemical analysis of paraffin-embedded human Squamous cell carcinoma of lung. 1. Antibody was diluted at 1:200 (4A°C overnight). 2. Tris-EDTA, pH9.0 was used for antigen retrieval. 3. Secondary antibody was diluted at 1:200 (room temperature, 45min).