

Anti-Acetyl-HIST1H3A/HIST1H3B/HIST1H3C/HIST1H3D/HIST1H3E/HIST1H3F/HIST1H3G/HIST1H3H/HIST1H3I/HIST1H3J/HIST2H3A/HIST2H3C/HIST2H3Lys27 antibody (STJA006008)
STJA006008

GENERAL INFORMATION

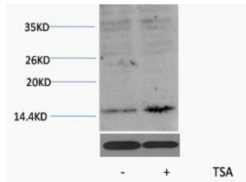
Product Type	Primary antibodies
Short Description	Rabbit polyclonal antibody anti-Acetyl-Histone H3.1/Histone H3.2/Histone H3.3-Lys27 is suitable for use in Western Blot research applications.
Applications	WB
Host/Source	Rabbit
Reactivity	Human/Mouse/Rat

PRODUCT PROPERTIES

Clonality	Polyclonal
Clone ID	
Concentration	
Conjugation	Unconjugated
Purification	The antibody was affinity-purified from rabbit antiserum by affinity-chromatography using specific immunogen.
Dilution Range	WB 1:200-500
Formulation	Liquid in PBS pH7.4, containing 0.5% BSA, 0.02% Sodium Azide and 50% Glycerol.
Isotype	IgG
Storage Instruction	Store at -20°C for up to 1 year from the date of receipt, and avoid repeat freeze-thaw cycles.

TARGET INFORMATION

Gene ID	8350/8351/8352/8353/8354/8355/8356/8357/8358/8968 3020/3021
Gene Symbol	H3C1.H3C2.H3C3.H3C4.H3C6.H3C7.H3C8.H3C10.H3C11.H3C12 H31_HUMAN H33_HUMAN H32_HUMAN <
Immunogen	Synthetic Peptide of Histone H3 (Acetyl Lys27)
Immunogen Region	
Specificity	The antibody detects endogenous Histone H3 (Acetyl Lys27) protein.
Immunogen Sequence	



Western blot analysis of extracts from HeLa cells, untreated (-) or treated, 1:2000. Secondary antibody (STJ99666) was diluted at 1:25000 cells nucleus extracted by Minute™ Cytoplasmic and Nuclear Fractionation Kit (SC-003, InventorTech, MN, USA).