

Anti-Acetyl-H4C1; H4C2; H4C3; H4C4; H4C5; H4C6; H4C8; H4C9; H4C11; H4C12; H4C13; H4C14; H4C15; H4C16-Lys16 antibody (STJA0006006)

STJA0006006

GENERAL INFORMATION

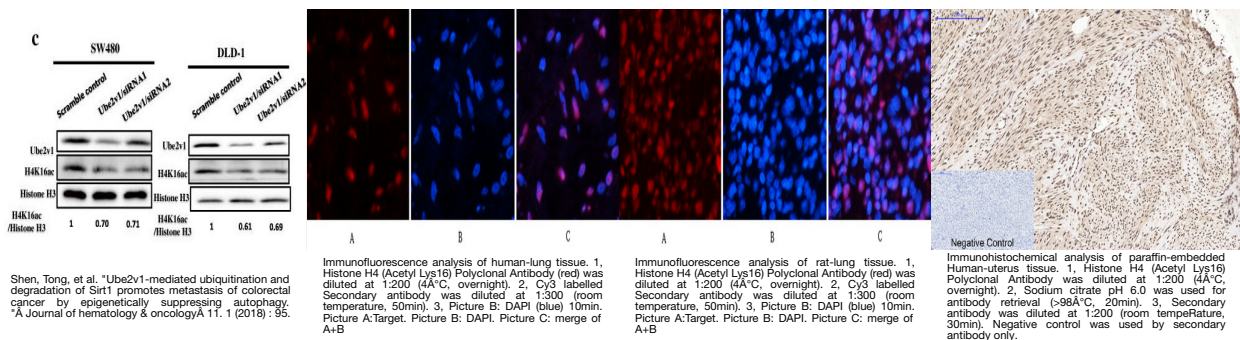
Product Type	Primary antibodies
Short Description	Rabbit polyclonal antibody anti-Acetyl-Histone H4-Lys16 is suitable for use in Immunofluorescence, Western Blot and Immunohistochemistry research applications.
Applications	IF/WB/IHC
Host/Source	Rabbit
Reactivity	Human/Mouse/Rat

PRODUCT PROPERTIES

Clonality	Polyclonal
Clone ID	
Concentration	
Conjugation	Unconjugated
Purification	The antibody was affinity-purified from rabbit antiserum by affinity-chromatography using specific immunogen.
Dilution Range	IF 1:50-200 WB 1:1000-2000 IHC 1:50-300
Formulation	Liquid in PBS pH7.4, containing 0.5% BSA, 0.02% Sodium Azide and 50% Glycerol.
Isotype	IgG
Storage Instruction	Store at -20°C for up to 1 year from the date of receipt, and avoid repeat freeze-thaw cycles.

TARGET INFORMATION

Gene ID	121504/554313/8294/8359/8360/8361/8362/8363/8364/8365/8366/8367/8368/8370
Gene Symbol	H4C1.H4C2.H4C3.H4C4.H4C5.H4C6.H4C8.H4C9.H4C11.H4C12.H4C13.H4C14.H4C15.H4C16
Uniprot ID	H4_HUMAN
Immunogen	Synthetic Peptide of Histone H4 (Acetyl Lys16)
Immunogen Region	
Specificity	The antibody detects endogenous Histone H3 (Acetyl Lys16) protein.
Immunogen Sequence	



This product is suitable for in-vitro studies under the RESEARCH USE ONLY [RUO] licence. This product must not be used as for diagnostic or other medical purposes.
 St John's Laboratory Ltd, Knowledge Dock Business Centre, University Way, London, E16 2RD | Tel: 0208 223 3081