

Anti-Acetyl-KPNA2-Lys22 antibody (STJA0005974)

STJA0005974

GENERAL INFORMATION

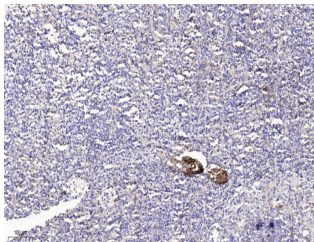
Product Type	Primary antibodies
Short Description	Rabbit polyclonal antibody anti-Acetyl-Importin subunit alpha-1-Lys22 is suitable for use in Western Blot, ELISA and Immunohistochemistry research applications.
Applications	WB/ELISA/IHC
Host/Source	Rabbit
Reactivity	Human/Mouse/Rat

PRODUCT PROPERTIES

Clonality	Polyclonal
Clone ID	
Concentration	1 mg/mL
Conjugation	Unconjugated
Purification	The antibody was affinity-purified from rabbit serum by affinity-chromatography using specific immunogen.
Dilution Range	WB 1:500-2000 IHC-p 1:50-300 ELISA 2000-20000
Formulation	Liquid in PBS containing 50% Glycerol, 0.5% BSA and 0.02% Sodium Azide.
Isotype	IgG
Storage Instruction	Store at -20°C for up to 1 year from the date of receipt, and avoid repeat freeze-thaw cycles.

TARGET INFORMATION

Gene ID	3838
Gene Symbol	KPNA2
Uniprot ID	IMA1_HUMAN
Immunogen	Synthesized peptide derived from human Karyopherin Alpha 2 (Acetyl Lys22)
Immunogen Region	
Specificity	This antibody detects endogenous levels of Human, Mouse, Rat Karyopherin Alpha 2 (Acetyl Lys22)
Immunogen Sequence	



Immunohistochemical analysis of paraffin-embedded human spleen. 1. Antibody was diluted at 1:200 (4A°C overnight). 2. Tris-EDTA, pH9.0 was used for antigen retrieval. 3. Secondary antibody was diluted at 1:200 (room temperature, 45min).