

Anti-Cleaved-MMP8-Leu101 antibody (100-101) (STJA0005895)

STJA0005895

GENERAL INFORMATION

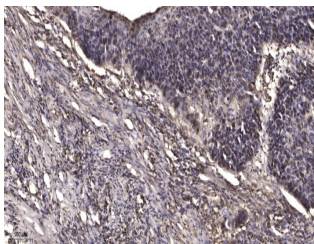
Product Type	Primary antibodies
Short Description	Rabbit polyclonal antibody anti-Cleaved-Neutrophil collagenase-Leu101 (100-101) is suitable for use in Western Blot and Immunohistochemistry research applications.
Applications	WB/IHC
Host/Source	Rabbit
Reactivity	Human/Mouse/Rat

PRODUCT PROPERTIES

Clonality	Polyclonal
Clone ID	
Concentration	1 mg/mL
Conjugation	Unconjugated
Purification	The antibody was affinity-purified from rabbit serum by affinity-chromatography using specific immunogen.
Dilution Range	WB 1:500-2000 IHC-p 1:50-300
Formulation	Liquid in PBS containing 50% Glycerol, 0.5% BSA and 0.02% Sodium Azide.
Isotype	IgG
Storage	Store at -20°C for up to 1 year from the date of receipt, and avoid repeat freeze-thaw cycles.
Instruction	

TARGET INFORMATION

Gene ID	4317
Gene Symbol	MMP8
Uniprot ID	MMP8_HUMAN
Immunogen	Synthesized peptide derived from human MMP8 (Cleaved-Leu101)
Immunogen Region	100-101
Specificity	This antibody detects endogenous levels of Human, Mouse, Rat MMP8 (Cleaved-Leu101, protein was cleaved amino acid sequence between 100-101)
Immunogen Sequence	



Immunohistochemical analysis of paraffin-embedded human Squamous cell carcinoma of lung. 1. Antibody was diluted at 1:200 (4A°C overnight). 2. Tris-EDTA, pH9.0 was used for antigen retrieval. 3. Secondary antibody was diluted at 1:200 (room temperature, 45min).

This product is suitable for in-vitro studies under the RESEARCH USE ONLY [RUO] licence. This product must not be used as for diagnostic or other medical purposes.
St John's Laboratory Ltd, Knowledge Dock Business Centre, University Way, London, E16 2RD | Tel: 0208 223 3081