

Anti-Cleaved-MMP19-Tyr98 antibody (97-98) (STJA0005890)

STJA0005890

GENERAL INFORMATION

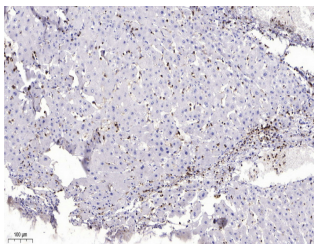
Product Type	Primary antibodies
Short Description	Rabbit polyclonal antibody anti-Cleaved-Matrix metalloproteinase-19-Tyr98 (97-98) is suitable for use in Western Blot and Immunohistochemistry research applications.
Applications	WB/IHC
Host/Source	Rabbit
Reactivity	Human/Mouse

PRODUCT PROPERTIES

Clonality	Polyclonal
Clone ID	
Concentration	1 mg/mL
Conjugation	Unconjugated
Purification	The antibody was affinity-purified from rabbit serum by affinity-chromatography using specific immunogen.
Dilution Range	WB 1:500-2000 IHC-p 1:50-300
Formulation	Liquid in PBS containing 50% Glycerol, 0.5% BSA and 0.02% Sodium Azide.
Isotype	IgG
Storage	Store at -20°C for up to 1 year from the date of receipt, and avoid repeat freeze-thaw cycles.
Instruction	

TARGET INFORMATION

Gene ID	4327
Gene Symbol	MMP19
Uniprot ID	MMP19_HUMAN
Immunogen	Synthesized peptide derived from human MMP19 (Cleaved-Tyr98)
Immunogen Region	97-98
Specificity	This antibody detects endogenous levels of Human, Mouse MMP19 (Cleaved-Tyr98, protein was cleaved amino acid sequence between 97-98)
Immunogen Sequence	



Immunohistochemical analysis of paraffin-embedded human liver cancer. 1. Antibody was diluted at 1:200 (4A°C overnight). 2. Tris-EDTA, pH9.0 was used for antigen retrieval. 3. Secondary antibody was diluted at 1:200 (room temperature, 45min).