

Anti-Cleaved-ITGA3-Phe33, Heavy Chain antibody (32-33) (STJA0005871)

STJA0005871

GENERAL INFORMATION

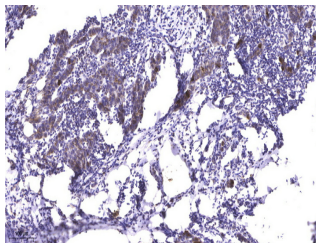
Product Type	Primary antibodies
Short Description	Rabbit polyclonal antibody anti-Cleaved-Integrin alpha-3-Phe33, Heavy Chain (32-33) is suitable for use in Western Blot, Immunofluorescence, ELISA and Immunohistochemistry research applications.
Applications	WB/IF/ELISA/IHC
Host/Source	Rabbit
Reactivity	Human/Mouse/Rat

PRODUCT PROPERTIES

Clonality	Polyclonal
Clone ID	
Concentration	1 mg/mL
Conjugation	Unconjugated
Purification	The antibody was affinity-purified from rabbit serum by affinity-chromatography using specific immunogen.
Dilution	WB 1:500-2000
Range	IF ICC 1:50-200 ELISA 1:2000-20000 IHC-p 1:50-200
Formulation	Liquid in PBS containing 50% Glycerol, 0.5% BSA and 0.02% Sodium Azide.
Isotype	IgG
Storage	Store at -20°C for up to 1 year from the date of receipt, and avoid repeat freeze-thaw cycles.
Instruction	

TARGET INFORMATION

Gene ID	3675
Gene Symbol	ITGA3
Uniprot ID	ITA3_HUMAN
Immunogen	Synthesized peptide derived from human ITGA3 (heavy chain, Cleaved-Phe33)
Immunogen	32-33
Region	
Specificity	This antibody detects endogenous levels of Human, Mouse, Rat ITGA3 (heavy chain, Cleaved-Phe33, protein was cleaved amino acid sequence between 32-33)
Immunogen Sequence	



Immunohistochemical analysis of paraffin-embedded human Breast cancer. 1. Antibody was diluted at 1:200 (4A°C overnight). 2. Tris-EDTA, pH9.0 was used for antigen retrieval. 3. Secondary antibody was diluted at 1:200 (room temperature, 45min).

This product is suitable for in-vitro studies under the RESEARCH USE ONLY [RUO] licence. This product must not be used as for diagnostic or other medical purposes.
St John's Laboratory Ltd, Knowledge Dock Business Centre, University Way, London, E16 2RD | Tel: 0208 223 3081