

Anti-Cleaved-MPO-Ser155 antibody (154-155) (STJA0005816)

STJA0005816

GENERAL INFORMATION

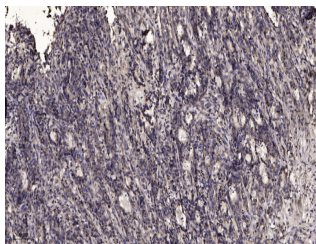
Product Type	Primary antibodies
Short Description	Rabbit polyclonal antibody anti-Cleaved-Myeloperoxidase-Ser155 (154-155) is suitable for use in Western Blot, ELISA and Immunohistochemistry research applications.
Applications	WB/ELISA/IHC
Host/Source	Rabbit
Reactivity	Human/Rat/Mouse

PRODUCT PROPERTIES

Clonality	Polyclonal
Clone ID	
Concentration	1 mg/mL
Conjugation	Unconjugated
Purification	The antibody was affinity-purified from rabbit serum by affinity-chromatography using specific immunogen.
Dilution Range	WB 1:500-2000 IHC-p 1:50-300 ELISA 2000-20000
Formulation	Liquid in PBS containing 50% Glycerol, 0.5% BSA and 0.02% Sodium Azide.
Isotype	IgG
Storage Instruction	Store at -20°C for up to 1 year from the date of receipt, and avoid repeat freeze-thaw cycles.

TARGET INFORMATION

Gene ID	4353
Gene Symbol	MPO
Uniprot ID	PERM_HUMAN
Immunogen	Synthesized peptide derived from human PERM (84k, Cleaved-Ser155)
Immunogen Region	154-155
Specificity	This antibody detects endogenous levels of Human PERM (84k, Cleaved-Ser155, protein was cleaved amino acid sequence between 154-155)
Immunogen Sequence	



Immunohistochemical analysis of paraffin-embedded human Gastric adenocarcinoma. 1. Antibody was diluted at 1:200 (4°C overnight). 2. Tris-EDTA, pH9.0 was used for antigen retrieval. 3. Secondary antibody was diluted at 1:200 (room temperature, 45min).

This product is suitable for in-vitro studies under the RESEARCH USE ONLY [RUO] licence. This product must not be used as for diagnostic or other medical purposes.
St John's Laboratory Ltd, Knowledge Dock Business Centre, University Way, London, E16 2RD | Tel: 0208 223 3081