

Anti-Sodium Potassium ATPase antibody [SM5233] (STJA0005233)

STJA0005233

GENERAL INFORMATION

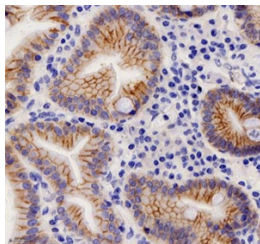
Product Type	Primary antibodies
Short Description	Mouse monoclonal antibody anti-Sodium Potassium ATPase is suitable for use in Immunohistochemistry and Immunofluorescence research applications.
Applications	IHC/IF
Host/Source	Mouse
Reactivity	Human/Mouse/Rat

PRODUCT PROPERTIES

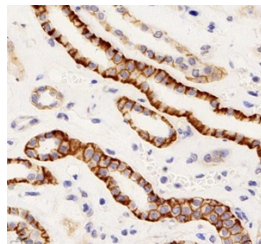
Clonality	Monoclonal
Clone ID	SM5233
Concentration	
Conjugation	Unconjugated
Purification	Affinity purification
Dilution Range	IHC/IF (H, M, R) 1:1000-1:2000
Formulation	PBS with 0.02% sodium azide, 100 Mu g/ml BSA and 50% glycerol.
Isotype	IgG1
Storage	Store at -20C for up to one year, and avoid repeated freeze-thaw cycles.
Instruction	

TARGET INFORMATION

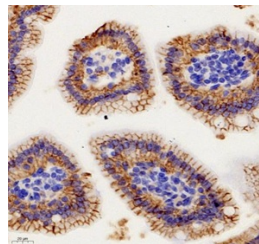
Gene ID	11928
Gene Symbol	Atp1a1
Uniprot ID	AT1A1_MOUSE
Immunogen	KLH conjugated Synthetic peptide corresponding to Mouse Sodium Potassium ATPase
Immunogen	
Region	
Specificity	
Immunogen	
Sequence	



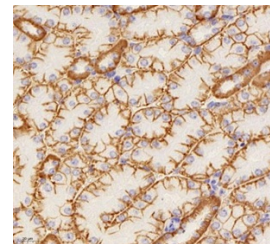
Immunohistochemistry of paraffin embedded human gastric cancer using Na K-ATPase at dilution of 1:1000



Immunohistochemistry of paraffin embedded human kidney using Na K-ATPase at dilution of 1:1000



Immunohistochemistry of paraffin embedded mouse jejunum using Na K-ATPase at dilution of 1:1000



This product is suitable for in-vitro studies under the RESEARCH USE ONLY [RUO] licence. This product must not be used as for diagnostic or other medical purposes.
St John's Laboratory Ltd, Knowledge Dock Business Centre, University Way, London, E16 2RD | Tel: 0208 223 3081