

Anti-STAT1 antibody [SM5222] (STJA0005222)

STJA0005222

GENERAL INFORMATION

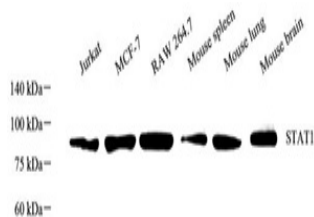
Product Type	Primary antibodies
Short Description	Mouse monoclonal antibody anti-STAT1 is suitable for use in Western Blot research applications.
Applications	WB
Host/Source	Mouse
Reactivity	Human/Mouse

PRODUCT PROPERTIES

Clonality	Monoclonal
Clone ID	SM5222
Concentration	
Conjugation	Unconjugated
Purification	Affinity purification
Dilution Range	WB (H, M) 1:500-1:1000
Formulation	PBS with 0.02% sodium azide, 100 µg/ml BSA and 50% glycerol.
Isotype	IgG
Storage Instruction	Store at -20°C for up to one year, and avoid repeated freeze-thaw cycles.

TARGET INFORMATION

Gene ID	
Gene Symbol	Stat1
Uniprot ID	STAT1_MOUSE
Immunogen	KLH conjugated Synthetic peptide corresponding to Mouse STAT1
Immunogen Region	
Specificity	
Immunogen Sequence	



This product is suitable for in-vitro studies under the RESEARCH USE ONLY [RUO] licence. This product must not be used as for diagnostic or other medical purposes.
 St John's Laboratory Ltd, Knowledge Dock Business Centre, University Way, London, E16 2RD | Tel: 0208 223 3081