

Anti-Annexin-4/ANXA4 antibody [SM5202] (STJA0005202)

STJA0005202

GENERAL INFORMATION

Product Type	Primary antibodies
Short Description	Mouse monoclonal antibody anti-Annexin-4/ANXA4 is suitable for use in Western Blot, Immunohistochemistry and Immunofluorescence research applications.
Applications	WB/IHC/IF
Host/Source	Mouse
Reactivity	Human/Mouse/Rat

PRODUCT PROPERTIES

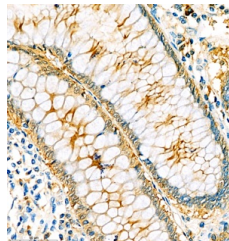
Clonality	Monoclonal
Clone ID	SM5202
Concentration	
Conjugation	Unconjugated
Purification	Affinity purification
Dilution Range	WB (H, M, R) 1:500-1:1000 IHC/IF (H, M, R) 1:2000-1:4000/1:800-1:1600
Formulation	PBS with 0.02% sodium azide, 100 Mu g/ml BSA and 50% glycerol.
Isotype	IgG1k
Storage	Store at -20C for up to one year, and avoid repeated freeze-thaw cycles.
Instruction	

TARGET INFORMATION

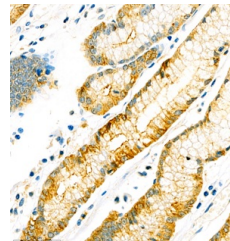
Gene ID	11746
Gene Symbol	Anxa4
Uniprot ID	ANXA4_MOUSE
Immunogen	KLH conjugated Synthetic peptidecorresponding to Mouse Annexin-4
Immunogen Region	
Specificity	
Immunogen Sequence	



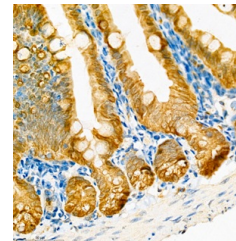
Western blot analysis of Annexin-4/ANXA4. Sample: Protein treated by RIPA Lysis Buffer. Blocking buffer: 3% Nonfat dry milk in TBST, RT, 1h. Primary antibody: 1:1000, 4C overnight. Secondary antibody: HRP conjugated Goat Anti-mouse IgG, 1:3000, RT, 1h.



Immunohistochemistry analysis of Annexin-4/ANXA4. Sample: Human small intestine, 4% PFA 12-24h. Antigen retrieval: Citrate buffer, pressure cooker 2 min. Primary antibody: 1:2000, 4C overnight. Secondary antibody: HRP conjugated Goat Anti-mouse IgG, 1:200, RT, 1h.



Immunohistochemistry analysis of Annexin-4/ANXA4. Sample: Human stomach cancer, 4% PFA 12-24h. Antigen retrieval: Citrate buffer, pressure cooker 2 min. Primary antibody: 1:2000, 4C overnight. Secondary antibody: HRP conjugated Goat Anti-mouse IgG, 1:200, RT, 1h.



Immunohistochemistry analysis of Annexin-4/ANXA4. Sample: mouse ileum, 4% PFA 12-24h. Antigen retrieval: Citrate buffer, pressure cooker 2 min. Primary antibody: 1:2000, 4C overnight. Secondary antibody: HRP conjugated Goat Anti-mouse IgG, 1:200, RT, 1h.

This product is suitable for in-vitro studies under the RESEARCH USE ONLY [RUO] licence. This product must not be used as for diagnostic or other medical purposes.
St John's Laboratory Ltd, Knowledge Dock Business Centre, University Way, London, E16 2RD | Tel: 0208 223 3081