

Anti-Cytochrome C antibody [SM5173] (STJA0005173)

STJA0005173

GENERAL INFORMATION

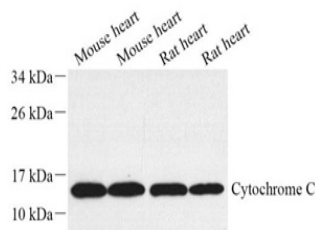
Product Type	Primary antibodies
Short Description	Mouse monoclonal antibody anti-Cytochrome C is suitable for use in Western Blot, Immunohistochemistry and Immunofluorescence research applications.
Applications	WB/IHC/IF
Host/Source	Mouse
Reactivity	Mouse/Rat

PRODUCT PROPERTIES

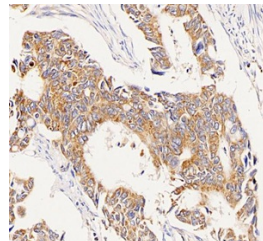
Clonality	Monoclonal
Clone ID	SM5173
Concentration	
Conjugation	Unconjugated
Purification	Affinity purification
Dilution Range	WB (M, R) 1:500-1:1000 IHC/IF (H, R) 1:500-1:1000/1:250-1:1000
Formulation	PBS with 0.02% sodium azide, 100 Mu g/ml BSA and 50% glycerol.
Isotype	IgG
Storage	Store at -20C for up to one year, and avoid repeated freeze-thaw cycles.
Instruction	

TARGET INFORMATION

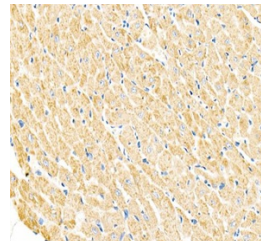
Gene ID	13063
Gene Symbol	Cyts
Uniprot ID	CYC_MOUSE
Immunogen	KLH conjugated Synthetic peptide corresponding to Mouse Cytochrome c
Immunogen Region	
Specificity	
Immunogen Sequence	



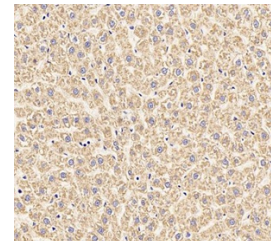
Western blot analysis of Cyt-C at dilution of 1:1000



Immunohistochemistry of paraffin embedded human stomach cancer using cyt-c at dilution of 1:2000



Immunohistochemistry of paraffin embedded mouse heart using cyt-c at dilution of 1:6000



Immunohistochemistry of paraffin embedded rat liver using cyt-c at dilution of 1:2000

This product is suitable for in-vitro studies under the RESEARCH USE ONLY [RUO] licence. This product must not be used as for diagnostic or other medical purposes.
St John's Laboratory Ltd, Knowledge Dock Business Centre, University Way, London, E16 2RD | Tel: 0208 223 3081