

Anti-BrdU antibody [SM5171] (STJA0005171)

STJA0005171

GENERAL INFORMATION

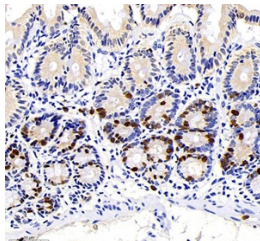
Product Type	Primary antibodies
Short Description	Mouse monoclonal antibody anti-BrdU is suitable for use in Immunohistochemistry and Immunofluorescence research applications.
Applications	IHC/IF
Host/Source	Mouse
Reactivity	All

PRODUCT PROPERTIES

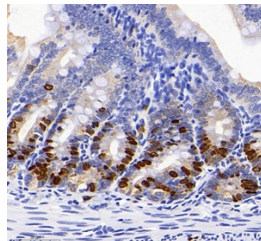
Clonality	Monoclonal
Clone ID	SM5171
Concentration	
Conjugation	Unconjugated
Purification	Affinity purification
Dilution Range	IHC/IF (All species) 1:100-1:500/1:100-1:500
Formulation	PBS with 0.02% sodium azide, 100 µg/ml BSA and 50% glycerol.
Isotype	IgG
Storage Instruction	Store at -20°C for up to one year, and avoid repeated freeze-thaw cycles.

TARGET INFORMATION

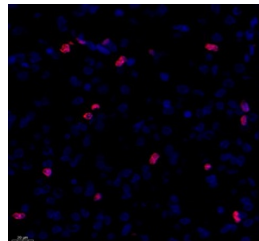
Gene ID	
Gene Symbol	
Uniprot ID	
Immunogen	KLH conjugated Synthetic peptide corresponding to Mouse BrdU
Immunogen Region	
Specificity	
Immunogen Sequence	



Immunohistochemistry analysis of BrdU. Sample: mouse jejunum, 4% PFAA 12-24h. Antigen retrieval: 2M HCL in pure water, 37°C, 30min. Blocking buffer: 3% BSA in PBS, RT, 30min. Primary antibody: 1:500, 4°C overnight. Secondary antibody: HRP Goat Anti-mouse IgG, 1:200 RT 1h.



Immunohistochemistry analysis of BrdU. Sample: mouse jejunum, 4% PFAA 12-24h. Antigen retrieval: 2M HCL in pure water, 37°C, 30min. Blocking buffer: 3% BSA in PBS, RT, 30min. Primary antibody: 1:500, 4°C overnight. Secondary antibody: HRP Goat Anti-mouse IgG, 1:200 RT 1h.



IF analysis of BrdU. Sample: mouse neonatal mouse brain, 4% PFAA 12-24h. Antigen retrieval: TE buffer, 98°C, 20min. Blocking buffer: 3% BSA in PBS, RT, 30min. Primary antibody: 1:500, 4°C overnight. Secondary antibody: Cy3 conjugated Goat Anti-mouse IgG, 1:200 RT 1h.

This product is suitable for in-vitro studies under the RESEARCH USE ONLY [RUO] licence. This product must not be used as for diagnostic or other medical purposes.
St John's Laboratory Ltd, Knowledge Dock Business Centre, University Way, London, E16 2RD | Tel: 0208 223 3081