

Anti-Synaptophysin antibody [SM5105] (STJA0005105)

STJA0005105

GENERAL INFORMATION

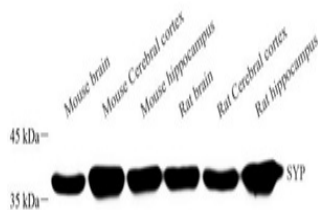
Product Type	Primary antibodies
Short Description	Mouse monoclonal antibody anti-Synaptophysin is suitable for use in Western Blot research applications.
Applications	WB
Host/Source	Mouse
Reactivity	Mouse/Rat

PRODUCT PROPERTIES

Clonality	Monoclonal
Clone ID	SM5105
Concentration	
Conjugation	Unconjugated
Purification	Affinity purification
Dilution Range	WB (M, R) 1:500-1:1000 IHC/IF (M, R) 1:500-1:1000
Formulation	PBS with 0.02% sodium azide, 100 Mu g/ml BSA and 50% glycerol.
Isotype	IgG
Storage Instruction	Store at -20C for up to one year, and avoid repeated freeze-thaw cycles.

TARGET INFORMATION

Gene ID	20977
Gene Symbol	Syp
Uniprot ID	SYPH_MOUSE
Immunogen	KLH conjugated Synthetic peptide corresponding to Mouse Synaptophysin
Immunogen Region	
Specificity	
Immunogen Sequence	



Western blot analysis of SYP at dilution of 1:1000

This product is suitable for in-vitro studies under the RESEARCH USE ONLY [RUO] licence. This product must not be used as for diagnostic or other medical purposes.
St John's Laboratory Ltd, Knowledge Dock Business Centre, University Way, London, E16 2RD | Tel: 0208 223 3081