

Anti-NSE antibody [SM5098] (STJA0005098)

STJA0005098

GENERAL INFORMATION

Product Type	Primary antibodies
Short Description	Mouse monoclonal antibody anti-NSE is suitable for use in Western Blot, Immunohistochemistry and Immunofluorescence research applications.
Applications	WB/IHC/IF
Host/Source	Mouse
Reactivity	Human/Mouse/Rat

PRODUCT PROPERTIES

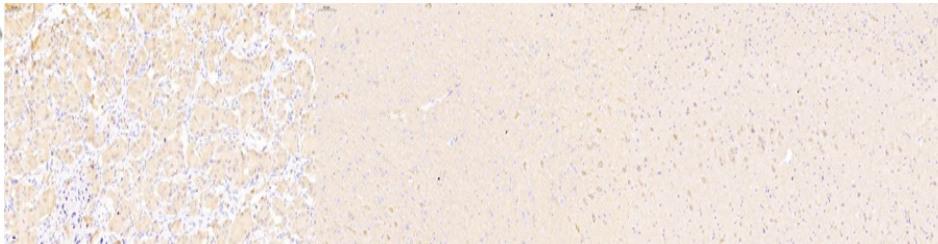
Clonality	Monoclonal
Clone ID	SM5098
Concentration	
Conjugation	Unconjugated
Purification	Affinity purification
Dilution Range	WB (H, M, R) 1:1000-1:2000 IHC/IF (H, M, R) 1:1000-1:2000
Formulation	PBS with 0.02% sodium azide, 100 Mu g/ml BSA and 50% glycerol.
Isotype	IgG2a
Storage Instruction	Store at -20C for up to one year, and avoid repeated freeze-thaw cycles.

TARGET INFORMATION

Gene ID	13807
Gene Symbol	Eno2
Uniprot ID	ENOG_MOUSE
Immunogen	KLH conjugated Synthetic peptide corresponding to Mouse NSE
Immunogen	
Region	
Specificity	
Immunogen	
Sequence	



Western blot analysis of NSE at dilution of 1:1000



Immunohistochemistry analysis of paraffin-embedded mouse brain using NSE at dilution of 1:2000

Immunohistochemistry analysis of paraffin-embedded rat brain using NSE at dilution of 1:2000

This product is suitable for in-vitro studies under the RESEARCH USE ONLY [RUO] licence. This product must not be used as for diagnostic or other medical purposes.
St John's Laboratory Ltd, Knowledge Dock Business Centre, University Way, London, E16 2RD | Tel: 0208 223 3081