

## Anti-PD1 antibody [SM5095] (STJA0005095)

STJA0005095

### GENERAL INFORMATION

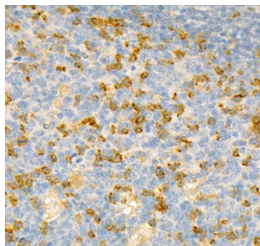
<b>Product Type</b>	Primary antibodies
<b>Short Description</b>	Mouse monoclonal antibody anti-PD1 is suitable for use in Immunohistochemistry and Immunofluorescence research applications.
<b>Applications</b>	IHC/IF
<b>Host/Source</b>	Mouse
<b>Reactivity</b>	Human

### PRODUCT PROPERTIES

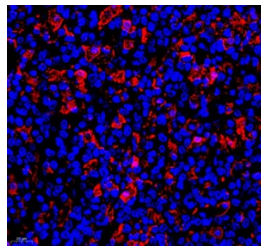
<b>Clonality</b>	Monoclonal
<b>Clone ID</b>	SM5095
<b>Concentration</b>	
<b>Conjugation</b>	Unconjugated
<b>Purification</b>	Affinity purification
<b>Dilution Range</b>	IHC/IF (H) 1:800-1:2400/1:400-1:800
<b>Formulation</b>	PBS with 0.02% sodium azide, 100 Mu g/ml BSA and 50% glycerol.
<b>Isotype</b>	IgG
<b>Storage Instruction</b>	Store at -20C for up to one year, and avoid repeated freeze-thaw cycles.

### TARGET INFORMATION

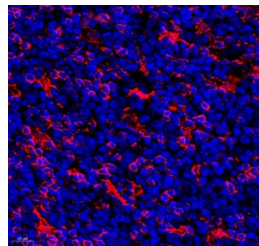
<b>Gene ID</b>	<a href="#">18566</a>
<b>Gene Symbol</b>	<a href="#">Pdc1</a>
<b>Uniprot ID</b>	<a href="#">PDCD1_MOUSE</a>
<b>Immunogen</b>	KLH conjugated Synthetic peptide corresponding to Mouse PD1
<b>Immunogen Region</b>	
<b>Specificity</b>	
<b>Immunogen Sequence</b>	



Immunohistochemistry analysis of PD1. Sample: Human tonsil, 4% PFA 12-24h. Antigen retrieval: Citrate buffer, pressure cooker 2min. Blocking buffer: 3% BSA in PBS, RT, 30min. Primary antibody: 1:1200, 4C overnight. Secondary antibody: HRP Goat Anti-mouse IgG, 1:200 RT 1h.



IF analysis of PD1. Sample: Human B-cell lymphoma, 4% PFA 12-24h. Antigen retrieval: Citrate buffer, pressure cooker 2min. Blocking buffer: 3% BSA in PBS, RT, 30min. Primary antibody: 1:400, 4C overnight. Secondary antibody: Cy3 conjugated Goat Anti-mouse IgG, 1:200 RT 1h.



Sample: Human tonsil, 4% PFA 12-24h. Antigen retrieval: Citrate buffer, pressure cooker 2min. Blocking buffer: 3% BSA in PBS, RT, 30min. Primary antibody: 1:400, 4C overnight. Secondary antibody: Cy3 conjugated Goat Anti-mouse IgG, 1:200 RT 1h.

This product is suitable for in-vitro studies under the RESEARCH USE ONLY [RUO] licence. This product must not be used as for diagnostic or other medical purposes.  
St John's Laboratory Ltd, Knowledge Dock Business Centre, University Way, London, E16 2RD | Tel: 0208 223 3081