

Anti-Insulin antibody [SM5094] (STJA0005094)

STJA0005094

GENERAL INFORMATION

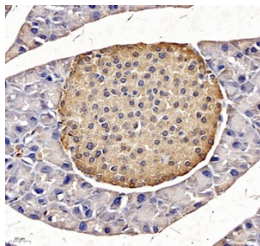
Product Type	Primary antibodies
Short Description	Mouse monoclonal antibody anti-Insulin is suitable for use in Immunohistochemistry and Immunofluorescence research applications.
Applications	IHC/IF
Host/Source	Mouse
Reactivity	Human/Mouse/Rat

PRODUCT PROPERTIES

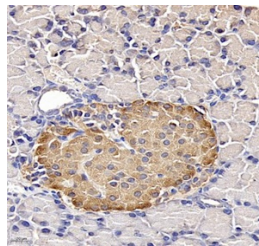
Clonality	Monoclonal
Clone ID	SM5094
Concentration	
Conjugation	Unconjugated
Purification	Affinity purification
Dilution Range	IHC/IF (H, M, R) 1:1000-1:2000
Formulation	PBS with 0.02% sodium azide, 100 Mu g/ml BSA and 50% glycerol.
Isotype	IgG2a
Storage Instruction	Store at -20C for up to one year, and avoid repeated freeze-thaw cycles.

TARGET INFORMATION

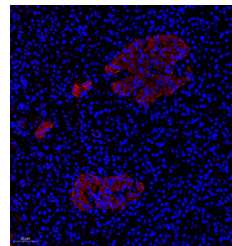
Gene ID	16333
Gene Symbol	<i>Ins1</i>
Uniprot ID	INS1_MOUSE
Immunogen	Recombinant protein corresponding to Mouse Insulin
Immunogen Region	
Specificity	
Immunogen Sequence	



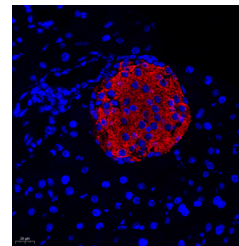
Immunohistochemistry analysis of Insulin. Sample: mouse pancreas, 4% PFA 12-24h. Antigen retrieval: Citrate buffer, pressure cooker 2min. Blocking buffer: 3% BSA in PBS, RT, 30min. Primary antibody: 1:1000, 4C overnight. Secondary antibody: HRP Goat Anti-mouse IgG, 1:200 RT 1h.



Immunohistochemistry analysis of Insulin. Sample: Rat pancreas, 4% PFA 12-24h. Antigen retrieval: Citrate buffer, pressure cooker 2min. Blocking buffer: 3% BSA in PBS, RT, 30min. Primary antibody: 1:1000, 4C overnight. Secondary antibody: HRP Goat Anti-mouse IgG, 1:200 RT 1h.



IF analysis of insulin. Sample: Human pancreas, 4% PFA 12-24h. Antigen retrieval: TE buffer, 95C, 20min. Blocking buffer: 3% BSA in PBS, RT, 30min. Primary antibody: 1:500, 4C overnight. Secondary antibody: Cy3 conjugated Goat Anti-mouse IgG, 1:200 RT 1h.



IF analysis of insulin. Sample: mouse pancreas, 4% PFA 12-24h. Antigen retrieval: TE buffer, 95C, 20min. Blocking buffer: 3% BSA in PBS, RT, 30min. Primary antibody: 1:500, 4C overnight. Secondary antibody: Cy3 conjugated Goat Anti-mouse IgG, 1:200 RT 1h.

This product is suitable for in-vitro studies under the RESEARCH USE ONLY [RUO] licence. This product must not be used as for diagnostic or other medical purposes.
St John's Laboratory Ltd, Knowledge Dock Business Centre, University Way, London, E16 2RD | Tel: 0208 223 3081