

Anti-EpCAM antibody [SM5087] (STJA0005087)

STJA0005087

GENERAL INFORMATION

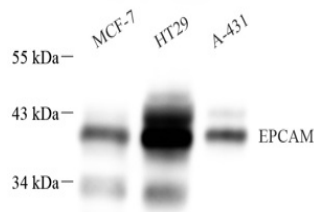
Product Type	Primary antibodies
Short Description	Mouse monoclonal antibody anti-EpCAM is suitable for use in Western Blot, Immunohistochemistry and Immunofluorescence research applications.
Applications	WB/IHC/IF
Host/Source	Mouse
Reactivity	Human

PRODUCT PROPERTIES

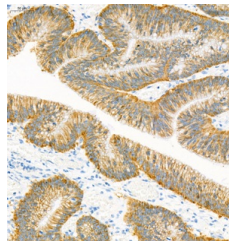
Clonality	Monoclonal
Clone ID	SM5087
Concentration	
Conjugation	Unconjugated
Purification	Affinity purification
Dilution Range	WB (H) 1:1000-1:2000 IHC/IF (H) 1:2000-1:4000
Formulation	PBS with 0.02% sodium azide, 100 µg/ml BSA and 50% glycerol.
Isotype	IgG2ak
Storage	Store at -20°C for up to one year, and avoid repeated freeze-thaw cycles.
Instruction	

TARGET INFORMATION

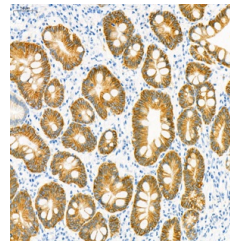
Gene ID	17075
Gene Symbol	Epcam
Uniprot ID	EPCAM_MOUSE
Immunogen	Recombinant protein corresponding to Mouse EpCAM
Immunogen Region	
Specificity	
Immunogen Sequence	



Western blot analysis of EpCAM. Sample: Protein treated by RIPA Lysis Buffer. Blocking buffer: 3% Nonfat dry milk in TBST, RT, 1h. Primary antibody: 1:1000, 4°C overnight. Secondary antibody: HRP conjugated Goat Anti-mouse IgG, 1:3000, RT, 1h.



Immunohistochemistry analysis of EpCAM. Sample: Human colon cancer, 4% PFA 12-24h. Antigen retrieval: Citrate buffer, pressure cooker 2 min. Primary antibody: 1:2000, 4°C overnight. Secondary antibody: HRP conjugated Goat Anti-mouse IgG, 1:200, RT, 1h.



Immunohistochemistry analysis of EpCAM. Sample: Human colon, 4% PFA 12-24h. Antigen retrieval: Citrate buffer, pressure cooker 2 min. Primary antibody: 1:2000, 4°C overnight. Secondary antibody: HRP conjugated Goat Anti-mouse IgG, 1:200, RT, 1h.

This product is suitable for in-vitro studies under the RESEARCH USE ONLY [RUO] licence. This product must not be used as for diagnostic or other medical purposes.
St John's Laboratory Ltd, Knowledge Dock Business Centre, University Way, London, E16 2RD | Tel: 0208 223 3081