

## Anti-Lamin A + Lamin C antibody [SM5079] (STJA0005079)

STJA0005079

### GENERAL INFORMATION

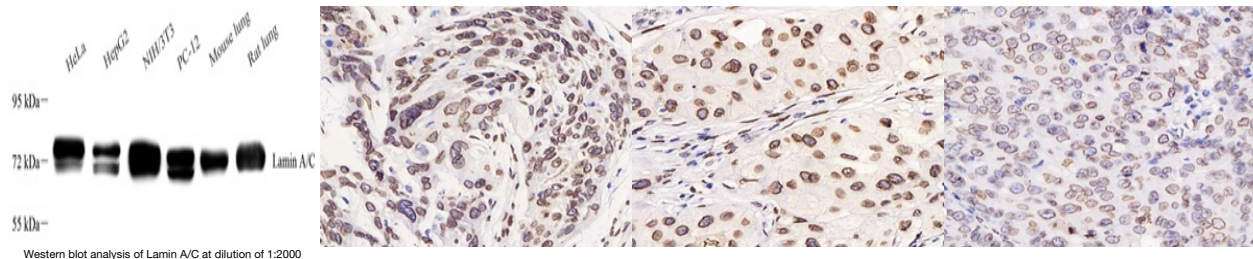
<b>Product Type</b>	Primary antibodies
<b>Short Description</b>	Mouse monoclonal antibody anti-Lamin A + Lamin C is suitable for use in Western Blot, Immunohistochemistry and Immunofluorescence research applications.
<b>Applications</b>	WB/IHC/IF
<b>Host/Source</b>	Mouse
<b>Reactivity</b>	Human/Mouse/Rat

### PRODUCT PROPERTIES

<b>Clonality</b>	Monoclonal
<b>Clone ID</b>	SM5079
<b>Concentration</b>	
<b>Conjugation</b>	Unconjugated
<b>Purification</b>	Affinity purification
<b>Dilution Range</b>	WB (H, M, R) 1:1000-1:2000 IHC/IF (H, R) 1:1500-1:3000
<b>Formulation</b>	PBS with 0.02% sodium azide, 100 Mu g/ml BSA and 50% glycerol.
<b>Isotype</b>	IgG2b
<b>Storage</b>	Store at -20C for up to one year, and avoid repeated freeze-thaw cycles.
<b>Instruction</b>	

### TARGET INFORMATION

<b>Gene ID</b>	<a href="#">16905</a>
<b>Gene Symbol</b>	<a href="#">Lmna</a>
<b>Uniprot ID</b>	<a href="#">LMNA_MOUSE</a>
<b>Immunogen</b>	KLH conjugated Synthetic peptide corresponding to Mouse Lamin A + Lamin C
<b>Immunogen Region</b>	
<b>Specificity</b>	
<b>Immunogen Sequence</b>	



Western blot analysis of Lamin A/C at dilution of 1:2000

This product is suitable for in-vitro studies under the RESEARCH USE ONLY [RUO] licence. This product must not be used as for diagnostic or other medical purposes.  
St John's Laboratory Ltd, Knowledge Dock Business Centre, University Way, London, E16 2RD | Tel: 0208 223 3081