

Anti-Albumin antibody [SM5071] (STJA0005071)

STJA0005071

GENERAL INFORMATION

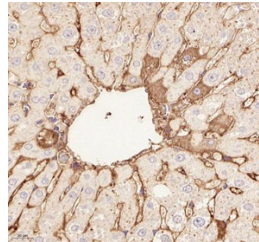
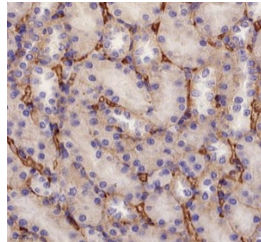
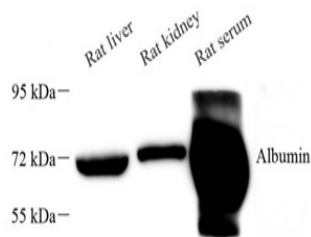
| | |
|--------------------------|--|
| Product Type | Primary antibodies |
| Short Description | Mouse monoclonal antibody anti-Albumin is suitable for use in Western Blot, Immunohistochemistry and Immunofluorescence research applications. |
| Applications | WB/IHC/IF |
| Host/Source | Mouse |
| Reactivity | Rat |

PRODUCT PROPERTIES

| | |
|-----------------------|---|
| Clonality | Monoclonal |
| Clone ID | SM5071 |
| Concentration | |
| Conjugation | Unconjugated |
| Purification | Affinity purification |
| Dilution Range | WB (R) 1:1000-1:2000 IHC/IF (R) 1:1000-1:2000 |
| Formulation | PBS with 0.02% sodium azide, 100 µg/ml BSA and 50% glycerol. |
| Isotype | IgG2a |
| Storage | Store at -20°C for up to one year, and avoid repeated freeze-thaw cycles. |
| Instruction | |

TARGET INFORMATION

| | |
|---------------------------|---|
| Gene ID | 11657 |
| Gene Symbol | Alb |
| Uniprot ID | ALBU_MOUSE |
| Immunogen | KLH conjugated Synthetic peptide corresponding to Mouse Albumin |
| Immunogen Region | |
| Specificity | |
| Immunogen Sequence | |



Immunohistochemistry of paraffin embedded rat liver using Albumin at dilution of 1:1000

This product is suitable for in-vitro studies under the RESEARCH USE ONLY [RUO] licence. This product must not be used as for diagnostic or other medical purposes.
St John's Laboratory Ltd, Knowledge Dock Business Centre, University Way, London, E16 2RD | Tel: 0208 223 3081