

Anti-Recombinant-beta III Tubulin antibody [SM5068] (STJA0005068)

STJA0005068

GENERAL INFORMATION

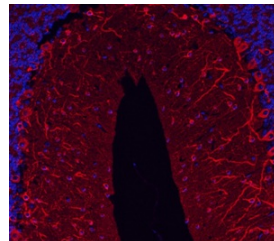
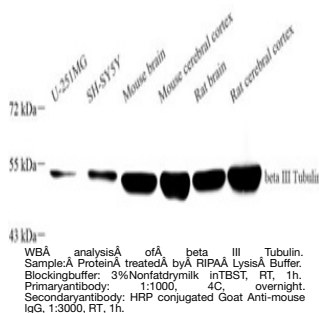
Product Type	Primary antibodies
Short Description	Mouse monoclonal antibody anti-Recombinant-beta III Tubulin is suitable for use in Western Blot, Immunohistochemistry and Immunofluorescence research applications.
Applications	WB/IHC/IF
Host/Source	Mouse
Reactivity	Human/Mouse/Rat

PRODUCT PROPERTIES

Clonality	Monoclonal
Clone ID	SM5068
Concentration	
Conjugation	Unconjugated
Purification	Affinity purification
Dilution Range	WB (H, M, R) 1:1000-1:2000 IHC/IF (H, M, R, Mk) 1:600-1:1200
Formulation	PBS with 0.02% sodium azide, 100 Mu g/ml BSA and 50% glycerol.
Isotype	IgG1
Storage	Store at -20C for up to one year, and avoid repeated freeze-thaw cycles.
Instruction	

TARGET INFORMATION

Gene ID	22152
Gene Symbol	Tubb3
Uniprot ID	TBB3_MOUSE
Immunogen	Recombinant protein corresponding to Mouse beta III Tubulin
Immunogen Region	
Specificity	
Immunogen Sequence	



IF analysis of beta III Tubulin red. Sample: mouse cerebellum, 4% PFA 12-24h. Blocking buffer: Blocking buffer: 3% BSA in PBS, RT, 30min. Primary antibody: 1:1000, 4C overnight. Secondary antibody: Cy3 conjugated Goat Anti-mouse IgG, 1:300, RT, 1h.

This product is suitable for in-vitro studies under the RESEARCH USE ONLY [RUO] licence. This product must not be used as for diagnostic or other medical purposes.
St John's Laboratory Ltd, Knowledge Dock Business Centre, University Way, London, E16 2RD | Tel: 0208 223 3081