

Anti-Neurofilament heavy polypeptide antibody [SM4961] (STJA0004961)

STJA0004961

GENERAL INFORMATION

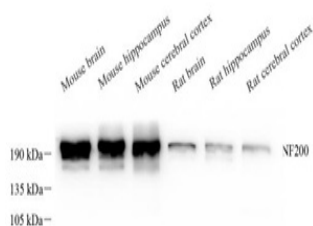
Product Type	Primary antibodies
Short Description	Mouse monoclonal antibody anti-Neurofilament heavy polypeptide is suitable for use in Western Blot, Immunohistochemistry and Immunofluorescence research applications.
Applications	WB/IHC/IF
Host/Source	Mouse
Reactivity	Mouse/Rat

PRODUCT PROPERTIES

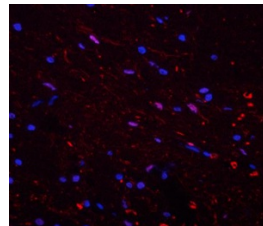
Clonality	Monoclonal
Clone ID	SM4961
Concentration	
Conjugation	Unconjugated
Purification	Affinity purification
Dilution Range	WB (M, R) 1:500-1:1000 IHC/IF (M, R) 1:500-1:1000
Formulation	PBS with 0.02% sodium azide, 100 Mu g/ml BSA and 50% glycerol.
Isotype	IgG1k
Storage	Store at -20C for up to one year, and avoid repeated freeze-thaw cycles.
Instruction	

TARGET INFORMATION

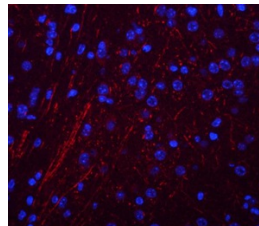
Gene ID	380684
Gene Symbol	Nefh
Uniprot ID	NFH_MOUSE
Immunogen	KLH conjugated Synthetic peptide corresponding to Mouse NF200
Immunogen Region	
Specificity	
Immunogen Sequence	



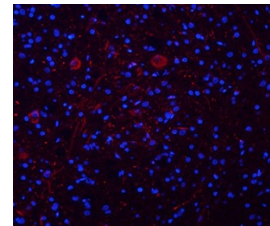
Western blot analysis of NF200. Sample: Protein treated by RIPA Lysis Buffer. Blocking buffer: 3% Nonfat dry milk in TBST, RT, 1h. Primary antibody: 1:1000, 4°C overnight. Secondary antibody: HRP Goat Anti-mouse IgG, 1:3000, RT, 1h.



IF analysis of NF200. Sample: Human brain, 4% PFA 12-24h. Antigen retrieval: Citrate buffer, 98°C, 20 min. Blocking buffer: 3% BSA in PBS, RT, 30min. Primary antibody: 1:500, 4°C overnight. Secondary antibody: Cy3 conjugated Goat Anti-mouse IgG, 1:200 RT 1h.



IF analysis of NF200. Sample: mouse brain, 4% PFA 12-24h. Antigen retrieval: Citrate buffer, 98°C, 20 min. Blocking buffer: 3% BSA in PBS, RT, 30min. Primary antibody: 1:500, 4°C overnight. Secondary antibody: Cy3 conjugated Goat Anti-mouse IgG, 1:200 RT 1h.



IF analysis of NF200. Sample: Rat brain, 4% PFA 12-24h. Antigen retrieval: Citrate buffer, 98°C, 20 min. Blocking buffer: 3% BSA in PBS, RT, 30min. Primary antibody: 1:500, 4°C overnight. Secondary antibody: Cy3 conjugated Goat Anti-mouse IgG, 1:200 RT 1h.

This product is suitable for in-vitro studies under the RESEARCH USE ONLY [RUO] licence. This product must not be used as for diagnostic or other medical purposes.
St John's Laboratory Ltd, Knowledge Dock Business Centre, University Way, London, E16 2RD | Tel: 0208 223 3081