

Anti-Cytokeratin 15 antibody [SM4955] (STJA0004955)

STJA0004955

GENERAL INFORMATION

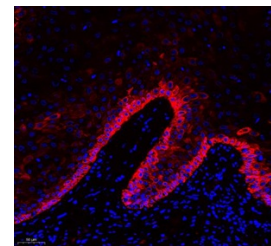
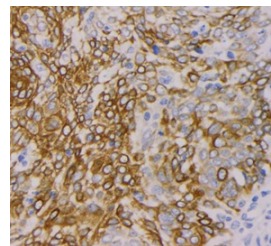
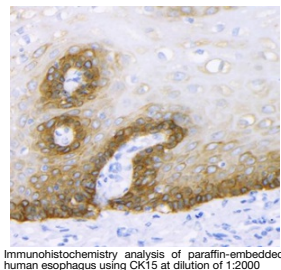
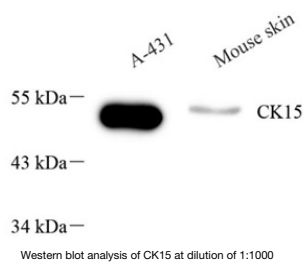
Product Type	Primary antibodies
Short Description	Mouse monoclonal antibody anti-Cytokeratin 15 is suitable for use in Western Blot, Immunohistochemistry and Immunofluorescence research applications.
Applications	WB/IHC/IF
Host/Source	Mouse
Reactivity	Human

PRODUCT PROPERTIES

Clonality	Monoclonal
Clone ID	SM4955
Concentration	
Conjugation	Unconjugated
Purification	Affinity purification
Dilution Range	WB (H) 1:500-1:1000 IHC/IF (H, R) 1:1000-1:2000
Formulation	PBS with 0.02% sodium azide, 100 µg/ml BSA and 50% glycerol.
Isotype	IgG1k
Storage	Store at -20°C for up to one year, and avoid repeated freeze-thaw cycles.
Instruction	

TARGET INFORMATION

Gene ID	3866
Gene Symbol	KRT15
Uniprot ID	K1C15_HUMAN
Immunogen	KLH conjugated Synthetic peptide corresponding to human Cytokeratin15
Immunogen Region	
Specificity	
Immunogen Sequence	



This product is suitable for in-vitro studies under the RESEARCH USE ONLY [RUO] licence. This product must not be used as for diagnostic or other medical purposes.
St John's Laboratory Ltd, Knowledge Dock Business Centre, University Way, London, E16 2RD | Tel: 0208 223 3081