

## Anti-Ki67 antibody [SM4945] (STJA0004945)

STJA0004945

### GENERAL INFORMATION

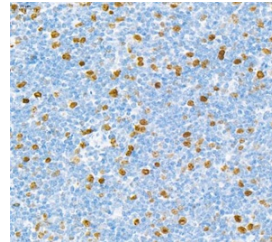
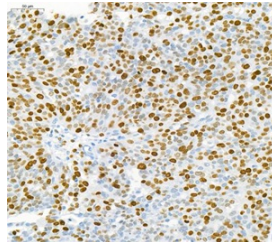
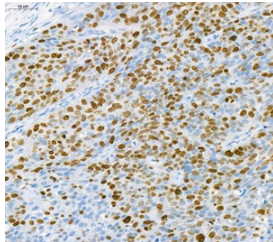
<b>Product Type</b>	Primary antibodies
<b>Short Description</b>	Mouse monoclonal antibody anti-Ki67 is suitable for use in Immunohistochemistry, Immunofluorescence and Immunocytochemistry research applications.
<b>Applications</b>	IHC/IF/ICC
<b>Host/Source</b>	Mouse
<b>Reactivity</b>	Human/Mouse/Rat/Human/Mouse/Rat

### PRODUCT PROPERTIES

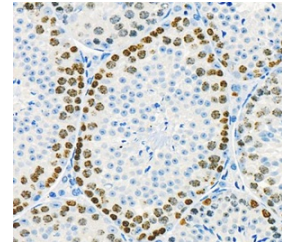
<b>Clonality</b>	Monoclonal
<b>Clone ID</b>	SM4945
<b>Concentration</b>	
<b>Conjugation</b>	Unconjugated
<b>Purification</b>	Affinity purification
<b>Dilution Range</b>	IHC/IF (H, M, R) 1:300-1:600 ICC/IF (H, M, R) 1:100-1:500
<b>Formulation</b>	PBS with 0.02% sodium azide, 100 µg/ml BSA and 50% glycerol.
<b>Isotype</b>	IgG1k
<b>Storage</b>	Store at -20°C for up to one year, and avoid repeated freeze-thaw cycles.
<b>Instruction</b>	

### TARGET INFORMATION

<b>Gene ID</b>	4288
<b>Gene Symbol</b>	MKI67
<b>Uniprot ID</b>	KI67_HUMAN
<b>Immunogen</b>	KLH conjugated Synthetic peptidecorresponding to Human Ki67
<b>Immunogen Region</b>	
<b>Specificity</b>	
<b>Immunogen Sequence</b>	



Immunohistochemistry analysis of paraffin-embedded mouse spleen using Ki67 at dilution of 1:600



Immunohistochemistry analysis of paraffin-embedded mouse testis using Ki67 at dilution of 1:600

This product is suitable for in-vitro studies under the RESEARCH USE ONLY [RUO] licence. This product must not be used as for diagnostic or other medical purposes.  
St John's Laboratory Ltd, Knowledge Dock Business Centre, University Way, London, E16 2RD | Tel: 0208 223 3081