

Anti-Desmin antibody [SM4942] (STJA0004942)

STJA0004942

GENERAL INFORMATION

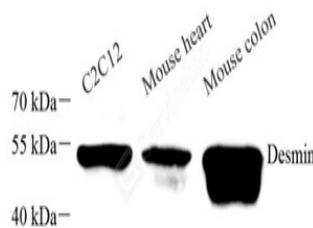
Product Type	Primary antibodies
Short Description	Mouse monoclonal antibody anti-Desmin is suitable for use in Western Blot, Immunohistochemistry and Immunofluorescence research applications.
Applications	WB/IHC/IF
Host/Source	Mouse
Reactivity	Mouse

PRODUCT PROPERTIES

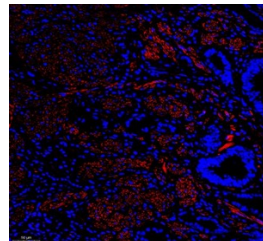
Clonality	Monoclonal
Clone ID	SM4942
Concentration	
Conjugation	Unconjugated
Purification	Affinity purification
Dilution Range	WB (M) 1:1000-1:2000 IHC/IF (H, M, R) 1:1000-1:2000/1:500-1:1000
Formulation	PBS with 0.02% sodium azide, 100 µg/ml BSA and 50% glycerol.
Isotype	IgG1k
Storage	Store at -20°C for up to one year, and avoid repeated freeze-thaw cycles.
Instruction	

TARGET INFORMATION

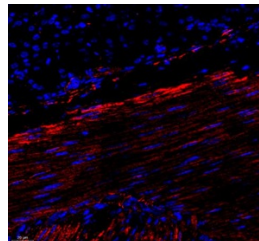
Gene ID	1674
Gene Symbol	DES
Uniprot ID	DESM_HUMAN
Immunogen	Recombinant human Desmin protein expressed in E.coli
Immunogen Region	
Specificity	
Immunogen Sequence	



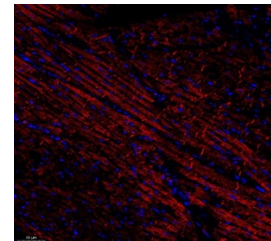
Western blot analysis of Desmin. Sample: Protein treated by RIPA Lysis Buffer. Blocking buffer: 3% Nonfat dry milk in TBST, RT, 1h. Primary antibody: 1:1000, 4°C overnight. Secondary antibody: HRP Goat Anti-mouse IgG, 1:3000, RT, 1h.



IF analysis of desmin. Sample: Human stomach, 4% PFA 12-24h. Antigen retrieval: Citrate buffer, pressure cooker 2min. Blocking buffer: 3% BSA in PBS, RT, 30min. Primary antibody: 1:500, 4°C overnight. Secondary antibody: Cy3 conjugated Goat Anti-mouse IgG, 1:200 RT 1h.



IF analysis of desmin. Sample: mouse stomach, 4% PFA 12-24h. Antigen retrieval: Citrate buffer, pressure cooker 2min. Blocking buffer: 3% BSA in PBS, RT, 30min. Primary antibody: 1:500, 4°C overnight. Secondary antibody: Cy3 conjugated Goat Anti-mouse IgG, 1:200 RT 1h.



IF analysis of desmin. Sample: mouse heart, 4% PFA 12-24h. Antigen retrieval: Citrate buffer, pressure cooker 2min. Blocking buffer: 3% BSA in PBS, RT, 30min. Primary antibody: 1:500, 4°C overnight. Secondary antibody: Cy3 conjugated Goat Anti-mouse IgG, 1:200 RT 1h.

This product is suitable for in-vitro studies under the RESEARCH USE ONLY [RUO] licence. This product must not be used as for diagnostic or other medical purposes.
St John's Laboratory Ltd, Knowledge Dock Business Centre, University Way, London, E16 2RD | Tel: 0208 223 3081