

Anti-Pan-Cadherin antibody [SM4933] (STJA0004933)

STJA0004933

GENERAL INFORMATION

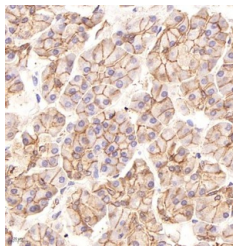
Product Type	Primary antibodies
Short Description	Mouse monoclonal antibody anti-Pan-Cadherin is suitable for use in Immunohistochemistry and Immunofluorescence research applications.
Applications	IHC/IF
Host/Source	Mouse
Reactivity	Human

PRODUCT PROPERTIES

Clonality	Monoclonal
Clone ID	SM4933
Concentration	
Conjugation	Unconjugated
Purification	The antibody was affinity-purified from mouse ascites by affinity-chromatography using specific immunogen.
Dilution Range	IHC/IF (H) 1:200-1:500
Formulation	Liquid in PBS containing 50% glycerol, 0.5% BSA and 0.02% sodium azide.
Isotype	
Storage Instruction	Store at -20C for up to one year, and avoid repeated freeze-thaw cycles.

TARGET INFORMATION

Gene ID	999
Gene Symbol	CDH1
Uniprot ID	CADH1_HUMAN
Immunogen	Synthesized peptide derived from human cadherin pan
Immunogen Region	
Specificity	
Immunogen Sequence	



Immunohistochemistry analysis of paraffin embedded human pancreas using Pan-cadherin at dilution of 1:200

This product is suitable for in-vitro studies under the RESEARCH USE ONLY [RUO] licence. This product must not be used as for diagnostic or other medical purposes.
St John's Laboratory Ltd, Knowledge Dock Business Centre, University Way, London, E16 2RD | Tel: 0208 223 3081