

## Anti-TREM2 antibody (STJA0003865)

STJA0003865

### GENERAL INFORMATION

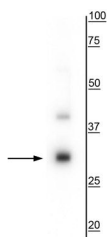
<b>Product Type</b>	Primary antibodies
<b>Short Description</b>	Rabbit polyclonal antibody anti-TREM2 is suitable for use in Western Blot and Immunocytochemistry research applications.
<b>Applications</b>	WB/ICC
<b>Host/Source</b>	Rabbit
<b>Reactivity</b>	Mouse/Human

### PRODUCT PROPERTIES

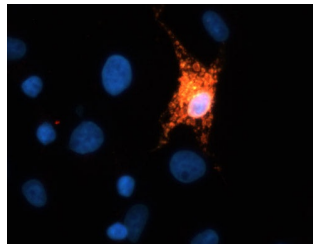
<b>Clonality</b>	Polyclonal
<b>Clone ID</b>	
<b>Concentration</b>	
<b>Conjugation</b>	Unconjugated
<b>Purification</b>	Antigen affinity purified serum
<b>Dilution Range</b>	WB 1:1000 ICC 1:150
<b>Formulation</b>	100 µl in 10 mM HEPES (pH 7.5) , 150 mM NaCl, 100 µg per ml BSA and 50% Glycerol.
<b>Isotype</b>	IgG
<b>Storage Instruction</b>	Store at -20°C for up to 1 year from the date of receipt, and avoid repeat freeze-thaw cycles.

### TARGET INFORMATION

<b>Gene ID</b>	54209
<b>Gene Symbol</b>	TREM2
<b>Uniprot ID</b>	TREM2_HUMAN
<b>Immunogen</b>	Recombinant human TREM2 fusion protein expressed in and purified from E. coli
<b>Immunogen Region</b>	
<b>Specificity</b>	
<b>Immunogen Sequence</b>	



Western blot of mouse whole brain lysate showing specific immunolabeling of the ~28 kDa TREM2 protein.



Immunofluorescence of FLAG-tagged TREM2 transfected COS cells showing TREM2 (STJA0003865, 1:150) staining in red and FLAG staining in green causing positive transfected cells to appear yellow. DNA is stained blue with DAPI.

This product is suitable for in-vitro studies under the RESEARCH USE ONLY [RUO] licence. This product must not be used as for diagnostic or other medical purposes.  
St John's Laboratory Ltd, Knowledge Dock Business Centre, University Way, London, E16 2RD | Tel: 0208 223 3081