

Anti-Phospho-Connexin 35/36-Ser276 antibody (STJA0003859)

STJA0003859

GENERAL INFORMATION

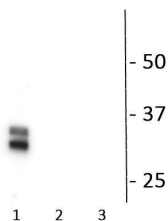
Product Type	Primary antibodies
Short Description	Rabbit polyclonal antibody anti-Phospho-Connexin 35/36-Ser276 is suitable for use in Western Blot and Immunohistochemistry research applications.
Applications	WB/IHC
Host/Source	Rabbit
Reactivity	Fish/Mouse/Rabbit

PRODUCT PROPERTIES

Clonality	Polyclonal
Clone ID	
Concentration	
Conjugation	Unconjugated
Purification	Antigen affinity purified from pooled serum
Dilution Range	WB 1:1000 IHC 1:500
Formulation	100 µl in 10 mM HEPES (pH 7.5) , 150 mM NaCl, 100 µg per ml BSA and 50% Glycerol.
Isotype	IgG
Storage Instruction	Store at -20°C for up to 1 year from the date of receipt, and avoid repeat freeze-thaw cycles.

TARGET INFORMATION

Gene ID	
Gene Symbol	
Uniprot ID	
Immunogen	Synthetic phospho-peptide corresponding to amino acid residues surrounding Ser276 of perch Cx35 conjugated to KLH
Immunogen Region	
Specificity	
Immunogen Sequence	



Western blot of connexin35/36 fusion proteins showing specific immunolabeling of the ~35 kDa connexin-35/36 phosphorylated at Ser276. The first lane (1) is PKA phosphorylated protein purified from the C-terminal domain. The second lane (2) shows phosphospecificity indicated by no labeling in protein without PKA stimulation. The third lane (3) is protein purified from the intracellular loop, demonstrating that there is no cross-reactivity with the other major PKA phosphorylation site at Ser110.

This product is suitable for in-vitro studies under the RESEARCH USE ONLY [RUO] licence. This product must not be used as for diagnostic or other medical purposes.
St John's Laboratory Ltd, Knowledge Dock Business Centre, University Way, London, E16 2RD | Tel: 0208 223 3081