

## Anti-KCC2-Thr1007 antibody (STJA0003854)

STJA0003854

### GENERAL INFORMATION

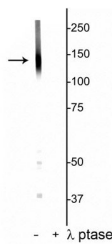
<b>Product Type</b>	Primary antibodies
<b>Short Description</b>	Rabbit polyclonal antibody anti-Potassium Chloride Cotransporter-Thr1007 is suitable for use in Western Blot research applications.
<b>Applications</b>	WB
<b>Host/Source</b>	Rabbit
<b>Reactivity</b>	Mouse/Rat/Bovine/Human/Non-Human Primates/Sheep

### PRODUCT PROPERTIES

<b>Clonality</b>	Polyclonal
<b>Clone ID</b>	
<b>Concentration</b>	
<b>Conjugation</b>	Unconjugated
<b>Purification</b>	This antibody was antigen affinity purified from pooled serum.
<b>Dilution Range</b>	WB 1:1000
<b>Formulation</b>	100 µl in 10 mM HEPES (pH 7.5) , 150 mM NaCl, 100 µg per ml BSA and 50% Glycerol.
<b>Isotype</b>	IgG
<b>Storage Instruction</b>	Store at -20°C for up to 1 year from the date of receipt, and avoid repeat freeze-thaw cycles.

### TARGET INFORMATION

<b>Gene ID</b>	171373
<b>Gene Symbol</b>	Slc12a5
<b>Uniprot ID</b>	S12A5_RAT
<b>Immunogen</b>	Synthetic phospho-peptide corresponding to amino acid residues surrounding Ser940 conjugated to KLH
<b>Immunogen Region</b>	
<b>Specificity</b>	
<b>Immunogen Sequence</b>	



Western blot of rat hippocampal lysate showing specific labeling of the ~135 kDa KCC2 protein phosphorylated at Thr1007 in the first lane (-). Phosphospecificity is shown in the second lane (+) where immunolabeling is completely eliminated by blot treatment with lambda phosphatase (Lambda-Ptase, 1200 units for 30 min).