

Anti-PLCB2-PLCB2 antibody (C-Term) (STJA0003853)

STJA0003853

GENERAL INFORMATION

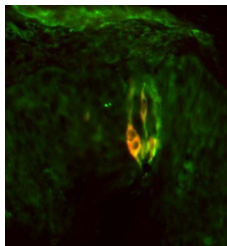
Product Type	Primary antibodies
Short Description	Rabbit polyclonal antibody anti-Phospholipase C B2-PLCB2 (C-Term) is suitable for use in Immunohistochemistry research applications.
Applications	IHC
Host/Source	Rabbit
Reactivity	Human/Non-Human Primates

PRODUCT PROPERTIES

Clonality	Polyclonal
Clone ID	
Concentration	
Conjugation	Unconjugated
Purification	This antibody was antigen affinity purified from pooled serum.
Dilution Range	IHC 1:1000
Formulation	100 µl in 10 mM HEPES (pH 7.5) , 150 mM NaCl, 100 µg per ml BSA and 50% Glycerol.
Isotype	IgG
Storage Instruction	Store at -20°C for up to 1 year from the date of receipt, and avoid repeat freeze-thaw cycles.

TARGET INFORMATION

Gene ID	5330
Gene Symbol	PLCB2
Uniprot ID	PLCB2_HUMAN
Immunogen	Peptide corresponding to amino acid residues from the C-terminal region of human PLC Beta 2.
Immunogen Region	C-Term
Specificity	
Immunogen Sequence	



Immunostaining of human larynx taste bud showing specific labeling of PLC Beta 2 (red) and GNAT3 (green). Photo courtesy of Mei Li, University of Colorado-Anschutz MC.

This product is suitable for in-vitro studies under the RESEARCH USE ONLY [RUO] licence. This product must not be used as for diagnostic or other medical purposes.
St John's Laboratory Ltd, Knowledge Dock Business Centre, University Way, London, E16 2RD | Tel: 0208 223 3081