

Anti-mCherry antibody (Full Length) [1C51] (STJA0003850)

STJA0003850

GENERAL INFORMATION

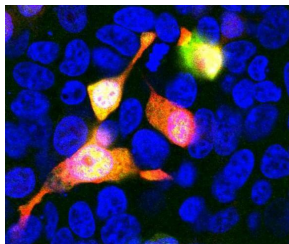
Product Type	Primary antibodies
Short Description	Mouse monoclonal antibody anti-mCherry (Full Length) is suitable for use in Western Blot, Immunohistochemistry and Immunocytochemistry research applications.
Applications	WB/IHC/ICC
Host/Source	Mouse
Reactivity	

PRODUCT PROPERTIES

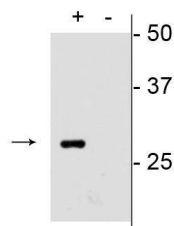
Clonality	Monoclonal
Clone ID	1C51
Concentration	
Conjugation	Unconjugated
Purification	This antibody was protein g purified culture from supernatant.
Dilution Range	WB 1:1000 IHC 1:500 ICC 1:500
Formulation	100 ul in PBS + 50% Glycerol and 5 mM Sodium Azide
Isotype	IgG2a
Storage Instruction	Store at -20°C for up to 1 year from the date of receipt, and avoid repeat freeze-thaw cycles.

TARGET INFORMATION

Gene ID	
Gene Symbol	
Uniprot ID	
Immunogen	Recombinant full length protein
Immunogen Region	Full Length
Specificity	
Immunogen Sequence	



Immunostaining of HEK293 cells transfected with mCherry (red) and stained with anti-mCherry antibody (STJA0003850, green, 1:500) subsequently appear yellow. The nuclei stained blue (DAPI) distinguishes untransfected cells.



Western blot of mCherry transfected HEK293 cell lysate (+) showing specific immunolabeling of the ~28 kDa mCherry protein. Labeling is absent in the untransfected lysate (-).