

Anti-MAP2-MAP2 antibody (STJA0003848)

STJA0003848

GENERAL INFORMATION

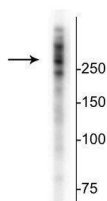
Product Type	Primary antibodies
Short Description	Goat polyclonal antibody anti-Microtubule Associated Protein 2-MAP2 is suitable for use in Western Blot, Immunohistochemistry and Immunocytochemistry research applications.
Applications	WB/IHC/ICC
Host/Source	Goat
Reactivity	Human/Mouse/Rat

PRODUCT PROPERTIES

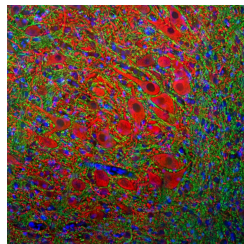
Clonality	Polyclonal
Clone ID	
Concentration	
Conjugation	Unconjugated
Purification	This antibody was protein g purified from serum.
Dilution Range	WB 1:1000 IHC 1:1000-1:2000 ICC 1:1000-1:2000
Formulation	100 ul in PBS + 50% Glycerol and 5 mm Sodium Azide
Isotype	IgG
Storage Instruction	Store at -20°C for up to 1 year from the date of receipt, and avoid repeat freeze-thaw cycles.

TARGET INFORMATION

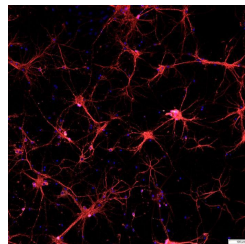
Gene ID	4133
Gene Symbol	MAP2
Uniprot ID	MTAP2_HUMAN
Immunogen	recombinant human MAP2 protein expressed in and purified from E. Coli
Immunogen Region	
Specificity	
Immunogen Sequence	



Western blot of rat cortical lysate showing specific immunolabeling of the ~280 kDa MAP2 protein.



Immunofluorescence of a section of rat brain stem showing specific labeling of MAP2 (cat. STJA0003848, 1:2000, red) in the perikarya and dendrites of neurons and specific labeling of the myelin sheath around axons with anti-MBP (cat. STJA0003695, 1:5000, green). The blue is DAPI revealing nuclear DNA.



Immunofluorescent image of primary mouse neurons specifically labelling MAP2 (STJA0003848, 1:1000, red). The blue nuclear stain is Hoechst. The image was kindly provided by Noah Johnson, University of Colorado, Anschutz Medical Campus.

This product is suitable for in-vitro studies under the RESEARCH USE ONLY [RUO] licence. This product must not be used as for diagnostic or other medical purposes.
St John's Laboratory Ltd, Knowledge Dock Business Centre, University Way, London, E16 2RD | Tel: 0208 223 3081