

## Anti-MAP2-MAP2 antibody [4H5] (STJA0003847)

STJA0003847

### GENERAL INFORMATION

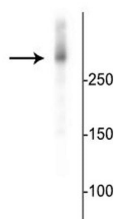
<b>Product Type</b>	Primary antibodies
<b>Short Description</b>	Mouse monoclonal antibody anti-Microtubule Associated Protein 2-MAP2 is suitable for use in Western Blot, Immunohistochemistry and Immunocytochemistry research applications.
<b>Applications</b>	WB/IHC/ICC
<b>Host/Source</b>	Mouse
<b>Reactivity</b>	Bovine/Human/Mouse/Rat

### PRODUCT PROPERTIES

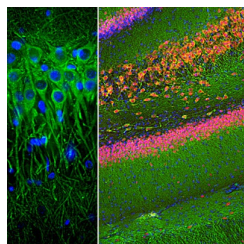
<b>Clonality</b>	Monoclonal
<b>Clone ID</b>	4H5
<b>Concentration</b>	
<b>Conjugation</b>	Unconjugated
<b>Purification</b>	This antibody was protein g purified culture from supernatant.
<b>Dilution Range</b>	WB 1:1000 IHC 1:1000 ICC 1:1000
<b>Formulation</b>	100 ul in PBS + 50% Glycerol and 5 mM Sodium Azide
<b>Isotype</b>	IgG1
<b>Storage Instruction</b>	Store at -20°C for up to 1 year from the date of receipt, and avoid repeat freeze-thaw cycles.

### TARGET INFORMATION

<b>Gene ID</b>	4133
<b>Gene Symbol</b>	MAP2
<b>Uniprot ID</b>	MTAP2_HUMAN
<b>Immunogen</b>	Purified bovine protein
<b>Immunogen Region</b>	
<b>Specificity</b>	
<b>Immunogen Sequence</b>	



Western blot of mouse cortical lysate showing specific immunolabeling of the ~280 kDa MAP2 protein.



Immunostaining of rat hippocampus showing specific labeling of neuronal dendrites and perikarya with Anti-Microtubule Associated Protein 2 in green, FOX3 in red and nuclei in blue.

This product is suitable for in-vitro studies under the RESEARCH USE ONLY [RUO] licence. This product must not be used as for diagnostic or other medical purposes.  
St John's Laboratory Ltd, Knowledge Dock Business Centre, University Way, London, E16 2RD | Tel: 0208 223 3081