

Anti-BECN1-Ser295 antibody (STJA0003836)

STJA0003836

GENERAL INFORMATION

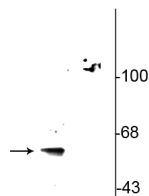
Product Type	Primary antibodies
Short Description	Rabbit polyclonal antibody anti-Becn1-Ser295 is suitable for use in Western Blot research applications.
Applications	WB
Host/Source	Rabbit
Reactivity	Human/Mouse/Rat/Bovine/Canine/Chicken/Human/Non-Human Primates/Xenopus/Zebrafish

PRODUCT PROPERTIES

Clonality	Polyclonal
Clone ID	
Concentration	
Conjugation	Unconjugated
Purification	This antibody was antigen affinity purified from pooled serum.
Dilution Range	WB 1:250
Formulation	100 µl in 10 mM HEPES (pH 7.5) , 150 mM NaCl, 100 µg per ml BSA and 50% Glycerol.
Isotype	IgG
Storage Instruction	Store at -20°C for up to 1 year from the date of receipt, and avoid repeat freeze-thaw cycles.

TARGET INFORMATION

Gene ID	8678
Gene Symbol	BECN1
Uniprot ID	BECN1_HUMAN
Immunogen	Synthetic phospho-peptide corresponding to amino acid residues surrounding Ser310 conjugated to KLH
Immunogen Region	
Specificity	
Immunogen Sequence	



Western blot of wild type (WT) beclin-1 expressed in HeLa cell lysate showing specific immunolabeling of beclin-1 phosphorylated at Ser295. This immunolabeling is eliminated in the beclin-1 alanine substitution mutant (S295A: Mut) expressed in HeLa cell lysate.

This product is suitable for in-vitro studies under the RESEARCH USE ONLY [RUO] licence. This product must not be used as for diagnostic or other medical purposes.
St John's Laboratory Ltd, Knowledge Dock Business Centre, University Way, London, E16 2RD | Tel: 0208 223 3081