

Anti-ARG1-ARG1 antibody (STJA0003835)

STJA0003835

GENERAL INFORMATION

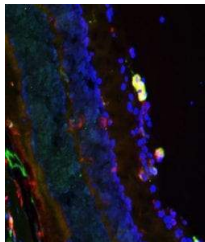
Product Type	Primary antibodies
Short Description	Chicken polyclonal antibody anti-Arginase I-ARG1 is suitable for use in Western Blot and Immunohistochemistry research applications.
Applications	WB/IHC
Host/Source	Chicken
Reactivity	Guinea Pig/Human/Mouse/Rat

PRODUCT PROPERTIES

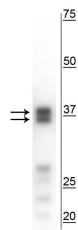
Clonality	Polyclonal
Clone ID	
Concentration	
Conjugation	Unconjugated
Purification	This antibody was total igy fraction.
Dilution Range	WB 1:1000 IHC 1:500
Formulation	100 µl in 10 mM HEPES (pH 7.5) , 150 mM NaCl, 100 µg per ml BSA and 50% Glycerol.
Isotype	IgY
Storage Instruction	Store at -20°C for up to 1 year from the date of receipt, and avoid repeat freeze-thaw cycles.

TARGET INFORMATION

Gene ID	29221
Gene Symbol	Arg1
Uniprot ID	ARGI1_RAT
Immunogen	Full-length recombinant rat arginase I
Immunogen Region	
Specificity	
Immunogen Sequence	



Immunofluorescent image of mouse retina specifically labeling arginase (146-ARG, 1:500, green) and CD205 (red). The blue nuclear stain is DAPI. The image was kindly provided by Sarah Gough, University of Miami Miller School of Medicine.



Western blot of mouse liver lysate showing specific immunolabeling of the ~35, 38 kDa arginase I protein.

This product is suitable for in-vitro studies under the RESEARCH USE ONLY [RUO] licence. This product must not be used as for diagnostic or other medical purposes.
St John's Laboratory Ltd, Knowledge Dock Business Centre, University Way, London, E16 2RD | Tel: 0208 223 3081